

TRIED & TESTED CONTRACT FURNITURE

WE'VE GOT YOUR COMMERCIAL FURNITURE NEEDS COVERED

TABLE TOPS

100's of decors, sizes and customisation opportunities spread across 7 table top ranges, with options for Indoor and Outdoor use, we have a table top to meet any requirement.

SEE PAGES 6 TO 61



TABLE BASES

11 Table Base and Frame styles, coffee, dining and poseur heights available, with options for Indoor and Outdoor use. As standard in Black or Stainless Steel, all our bases can be powder coated to meet your design brief.

SEE PAGES 62 TO 105



TABLE LEGS

Four Table Leg styles available, with both dining and coffee height achievable, our Table Legs offer incredible adaptability. The ability to add as many legs as you like to a top allowing you to create a complete table using any tabletop size.

SEE PAGES 106 TO 115



UNITE

Our exciting Unite range brings modern, fresh dynamics to our Social Space and Hospitality offering. Featuring highly customisable table frames and bases with modern colour options, our Unite range allows you to meet the latest trends for your customers.

SEE PAGES 116 TO 125



CHAIRS

We offer 10 different styles of chair to compliment your chosen tabletop and table base. With 9 options suitable for both Indoor and Outdoor use, a multitude of colour options, and even bespoke capabilities, we have the chairs to help you complete your ordering journey.

SEE PAGES 126 TO 171



CONTENTS

TABLE TOPS

6 – 61

TUFF TOP® LAMINATE



8

TUFF TOP® MFC



26

TUFF TOP® SOLID MARBLE
& QUARTZ



30

TUFF TOP® COMPACT LAMINATE



36

TUFF TOP® SOLID WOOD



40

TUFF TOP® RUSTIC WOOD



50

WERZALIT



54

TABLE BASES

62 – 105

THE FORZA



64

THE DANILO



70

THE QUATTRO



76

THE CAVA



80

THE MANOR



82

THE ANCHOR



84

THE VALENCIA



86

THE MADRID



88

THE MALAGA



90

THE CONTINENTAL



92

THE PHOENIX



94

THE BISTRO



98

THE BISTRO GOLD



100

THE BOOM TABLE



102

THE MANHATTAN FRAME



104

TABLE LEGS

106 – 115

THE HAIRPIN



108

THE NAPA



110

THE SCANDI



112

THE INDUSTRIAL



114

UNITE

116 – 125

THE BREAK OUT



118

THE SYNERGY



120

THE SYNERGY TWIN



122

THE QUAD



124

CHAIRS

126 – 171

THE BOURBON



128

THE BOURBON MTO



134

THE VIVO



136

THE BOOM



140

THE LUXE



144

THE ZEST



146

THE STRATA



150

THE FRESCO



154

THE PARIS



158

THE VIBE



160

THE CANTERBURY



164

THE CANTERBURY TABLE



168

PLAZA PARASOL



170

THE CANTERBURY /
PLAZA SETS



171

ADDITIONAL SERVICES

172 – 181

ORDERING SWATCHES



174

IPAN IPAN WIRELESS
CHARGING



176

POWDER COATING



178

METAL INSERTS & FIXINGS



180

CABLE PORTS &
PARASOL HOLES



181



TERMS & CONDITIONS

182 – 184



Round Tuff Top® Laminate table top in Light Grey Chicago with a Champagne metallic edging (page 23)

TABLE TOPS

TUFF TOP® LAMINATE



Our high quality and attractive Tuff Top® Laminate table tops are perfect for any commercial hospitality, office or canteen-based dining environment. These tops are manufactured in the UK using only premium branded laminates which are scratch resistant and heat resistant to 180 °C. The ultimate in durability.

Round Tuff Top® Laminate table top in Flamingo Pink with a Gold metallic edging (page 23)



SWATCH SAMPLES
ARE AVAILABLE FOR
EVERY TABLE TOP
TYPE AND DÉCOR
THAT WE
OFFER





Heat resistant to 180 °C,
and scratch resistant
to suit any indoor
environment



Antimicrobial, easy
clean, wipeable
surface



2mm impact resistant
ABS edge as standard



FSC certified
MDF Core



5 year structural
warranty



Metal insert service



Bespoke edge
shape and colour



STOCKED DÉCORS & SIZES



700mm Round White Tuff Top® Laminate (page 10)
on a Danilo medium dining height base (page 74)
with two Strata Anthracite side chairs (page 153)
Product code: SSRMD001-700DLWHI-STRANT2

STOCKED DÉCORS (25MM)

We hold four of our most popular décors in stock, available for same day despatch.



WHITE

Colour code: LWHI
Décor code: 8100



OAK

Colour code: LOAK
Décor code: H3368 ST9



WALNUT

Colour code: LWAL
Décor code: H3734 ST9






WENGE

Colour code: LWEN
Décor code: H1137 ST12

STOCKED SIZES

Round, Square and Rectangle shapes,
with up to 10 size variations for each décor.

TABLE SHAPE	SIZE
	500 × 500mm
	600 × 600mm
	700 × 700mm
	800 × 800mm
	600mm diameter
	700mm diameter (white only)
	800mm diameter (white only)
	900mm diameter (white only)
	1000mm diameter (white only)
	1200 × 700mm

TUFF TOP® LAMINATE HIGH GLOSS

IN STOCK






WITH METALLIC GOLD EDGING

- Luxury high gloss look, with scratch resistant finish
- 25mm contract grade laminate, suitable for a busy hospitality setting
- Heat resistant to 180 °C to suit any indoor environment
- Easy clean, wipeable surface
- Bespoke sizes are available through our Made To Order service

SWATCH SAMPLES
ARE AVAILABLE FOR
EVERY TABLE TOP
TYPE AND DÉCOR
THAT WE
OFFER



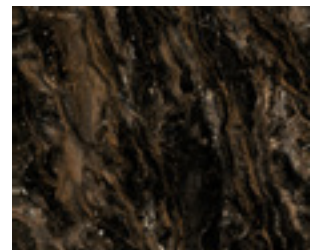
Tuff Top® Laminate - High Gloss table top in Marbled Cappuccino with Gold metallic edging on a Bistro Gold dining height base (page 100) with two Fresco side chairs (page 157)

TABLE SHAPE	SIZE
	600 × 600mm
	700 × 700mm
	700mm diameter
	1200 × 700mm



CALACATTA MARBLE

Code: F3460



MARBLED CAPPUCCINO

Code: F9482



MADE TO ORDER LAMINATE

MADE TO
ORDER

Our Tuff Top® Laminate range has over 100 décors for you to choose from. A massive selection of Solid / Block colours, Wood Effect décors, and Stone Effect décors. We want to give you the option to fulfil any design brief or meet any brand theme that you want to achieve.



700mm Round White Carrara Marble Tuff Top® Laminate MTO top with Gold metallic ABS edging on a Danilo Round medium dining height base (page 74) powder coated Gold (page 178)

THICKNESS

Available as standard as a 25mm thickness, or as a 40mm thickness for an additional charge - see price list






25MM (STANDARD)



40MM

MADE TO ORDER SIZES

TABLE SHAPE	MIN SIZE	MAX SIZE
	400 x 400mm	1200 x 1200mm
	400mm diameter	1200mm diameter
	400 x 300mm	3000 x 1200mm



700mm Round Arctic Grey Tuff Top® Laminate MTO top with Silver metallic ABS edging on a Danilo Round medium dining height base (page 74)



600mm diameter Black Pietra Grigia
25mm thick Tuff Top® Laminate
top with Bronze ABS edging
Product code: P600DL25F206BRO

EGGER DÉCORS



UNI COLOURS - MUTED COLOURS



SAND YELLOW

Code: U125 ST9



DARK BROWN

Code: U818 ST9



SAGE GREEN

Code: U638 ST9



REED GREEN

Code: U604 ST9



AGAVE GREEN

Code: U645 ST9



FJORD GREEN

Code: U636 ST9



STONE GREEN

Code: U665 ST9



FIR GREEN

Code: U699 ST9



MONUMENT GREY

Code: U780 ST9



OCEAN BLUE

Code: U565 ST9



INDIGO BLUE

Code: U599 ST9



DENIM BLUE

Code: U540 ST9



MISTY BLUE

Code: U502 ST9



TYROLEAN BLUE

Code: U504 ST9



ANTIQUE ROSE

Code: U325 ST9



RUST RED

Code: U335 ST9



GARNET RED

Code: U399 ST9

UNI COLOURS - BOLD COLOURS



APRICOT NUDE

Code: U232 ST9



CARAMEL NUDE

Code: U830 ST9



CHINA RED

Code: U321 ST9



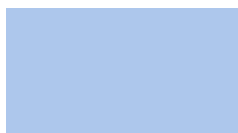
CURRY YELLOW

Code: U163 ST9



FLAMINGO PINK

Code: U363 ST9



HORIZON BLUE

Code: U522 ST9



KIWI GREEN

Code: U626 ST9



PISTACHIO GREEN

Code: U608 ST9



PURPLE

Code: U420 ST9



SIENA ORANGE

Code: U350 ST9

UNI COLOURS - GREY TONES

				
ALPINE WHITE	PREMIUM WHITE	PORCELAIN WHITE	PLATINUM WHITE	PLATINUM WHITE
Code: W1100 ST9	Code: W1000 ST9	Code: W1200 ST9	Code: W980 ST7	Code: W980 SM
				
BLACK	SILK GREY	PEARL GREY	ARCTIC GREY	WHITE GREY
Code: U999 ST7	Code: U707 ST9	Code: U763 ST9	Code: U788 ST9	Code: U775 ST9
				
LIGHT GREY	DUST GREY	ANGORA GREY	DIAMOND GREY	CARBON GREY
Code: U708 ST9	Code: U732 ST9	Code: U705 ST9	Code: U963 ST9	Code: U968 ST9
				
GRAPHITE GREY	ALABASTER WHITE	CAMÉ BEIGE	CREMA BEIGE	CARAT BEIGE
Code: U961 ST7	Code: U104 ST9	Code: U216 ST9	Code: U222 ST9	Code: U115 ST9
				
SAND BEIGE	ALMOND BEIGE	CASHMERE GREY	STONE GREY	TRUFFLE BROWN
Code: U156 ST9	Code: U211 ST9	Code: U702 ST9	Code: U727 ST9	Code: U748 ST9
				
TAUPE GREY	PEBBLE GREY	ONYX GREY	CUBANITE GREY	DARK TAUPE
Code: U750 ST9	Code: U201 ST9	Code: U960 ST9	Code: U767 ST9	Code: U740 ST9
				
LAVA GREY	SOFT BLACK	BLACK	BLACK	
Code: U741 ST9	Code: U899 ST9	Code: U999 ST19	Code: U999 ST20	

EGGER DÉCORS



WOODGRAIN REPRODUCTIONS



TRONDHEIM ASH

Code: H1225 ST12



WHITE FINELINE

Code: H3195 ST19



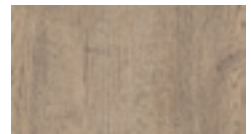
SEVILLA ASH

Code: H1223 ST19



GREY BROWN
WHITERIVER OAK

Code: H1313 ST10



GREY BEIGE SPREE
OAK

Code: H1357 ST10



BEIGE GREY
LORENZO OAK

Code: H3146 ST19



GREY VICENZA OAK

Code: H3158 ST19



DARK GREY
FINELINE

Code: H3198 ST19



ANTHRACITE
FINELINE METALLIC

Code: H3190 ST19



TRUFFLE BROWN
DENVER OAK

Code: H1399 ST10



TRUFFLE BROWN
DAVOS OAK

Code: H3133 ST12



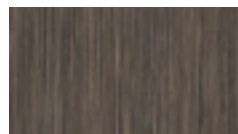
GREY NEBRASKA
OAK

Code: H3332 ST10



VINTAGE SANTA FE
OAK

Code: H1330 ST10



NORWICH OAK

Code: H3003 ST19



NATURAL CARINI
WALNUT

Code: H3710 ST12



LINCOLN WALNUT

Code: H1714 ST19



BROWN WARMIA
WALNUT

Code: H1307 ST19



TOBACCO PACIFIC
WALNUT

Code: H3702 ST10



DARK BROWN
EUCALYPTUS

Code: H3043 ST12

WOODGRAIN REPRODUCTIONS

LIGHT LAKELAND
ACACIA

Code: H1277 ST9



SAND BIRCH

Code: H1732 ST9

NATURAL NEBRASKA
OAK

Code: H3331 ST10



PARONA WALNUT

Code: H1715 ST12

NATURAL PACIFIC
WALNUT

Code: H3700 ST10

KAISERSBERG
OAK

Code: H3349 ST19

NATURAL
BARDOLINO OAK

Code: H1145 ST10

NATURAL SHEFFIELD
ACACIA

Code: H1242 ST10

NATURAL DAVOS
OAK

Code: H3131 ST12

NATURAL KENDAL
OAK

Code: H3170 ST12



VICENZA OAK

Code: H3157 ST12



NATURAL WILD OAK

Code: H1318 ST10



NATURAL HICKORY

Code: H3730 ST10

NATURAL HAMILTON
OAK

Code: H3303 ST10



DARK HUNTON OAK

Code: H2033 ST10



OILED KENDAL OAK

Code: H3171 ST12

NATURAL
LANCASTER OAK

Code: H3368 ST9

BROWN BELMONT
OAK

Code: H1303 ST12

BROWN TONSBERG
OAK

Code: H309 ST12

NATURAL DIJON
WALNUT

Code: H3734 ST9



EGGER DÉCORS

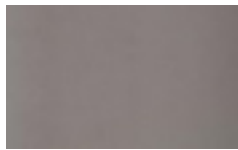


MATERIAL REPRODUCTIONS



BRUSHED
SILVERGREY

Code: F765 ST20



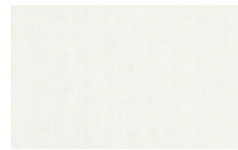
METALLIC INOX

Code: F500 ST20



GREY CANVAS

Code: F634 ST76



WHITE LINEN

Code: F422 ST10



BROWN LINEN

Code: F424 ST10



CUBANITE
STEELBRUSH

Code: F434 T20



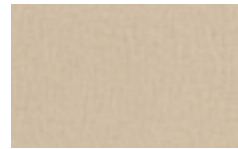
GOLDEN BRUSHED
METAL

Code: F527 ST20



GREY TEXTILE

Code: F417 ST10



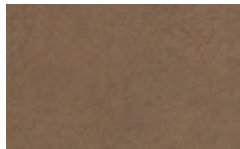
BEIGE TEXTILE

Code: F416 ST10



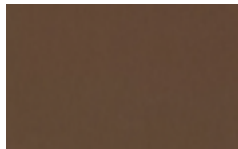
ANTHRACITE LINEN

Code: F433 ST10



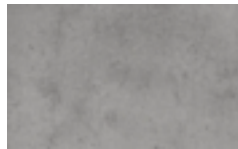
COBRA BRONZE

Code: F323 ST20



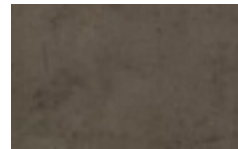
BRONZE BRUSHED
METAL

Code: F528 ST20



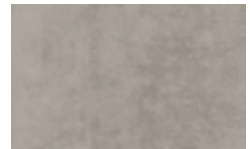
LIGHT GREY
CHICAGO CONCRETE

Code: F186 ST9



DARK GREY
CHICAGO CONCRETE

Code: F187 ST9



CHROMIX SILVER

Code: F638 ST10



WHITE CARRARA
MARBLE

Code: F204 ST9



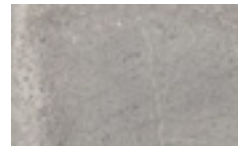
WHITE LEVANTO
MARBLE

Code: F812 ST9



CRYSTAL MARBLE

Code: F800 ST9



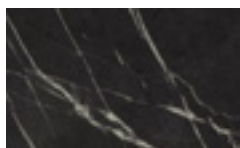
LIGHT GREY
CANDELA MARBLE

Code: F243 ST76



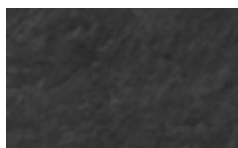
ANTHRACITE
CANDELA MARBLE

Code: F244 ST76



BLACK PIETRA
GRIGIA

Code: F206 ST9



SCIVARO SLATE

Code: F235 ST76



CUPRIA SLATE

Code: F237 ST76

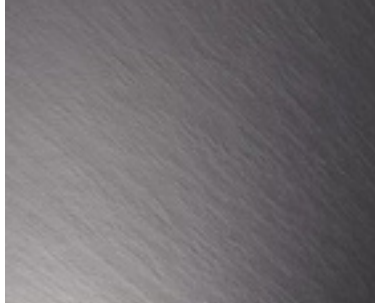
EGGER STRUCTURES

MADE TO
ORDER



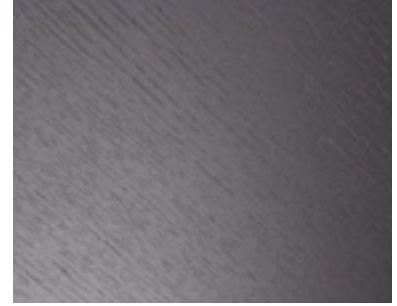
SM – SEMI MATT

A semi-matt surface which could not look any smoother



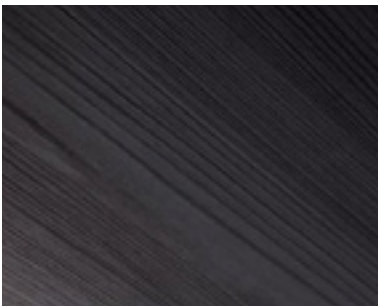
ST10 – DEEPSKIN ROUGE

A highly authentic and realistic texture for solid wood reproductions



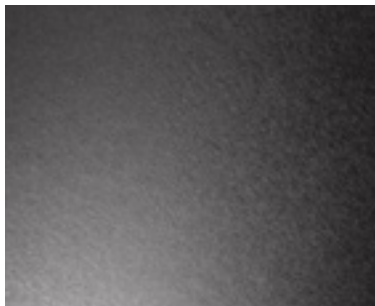
ST12 – OMNIPORE MATT

An irregular distribution of linear pores of various depths gives the surface a natural look



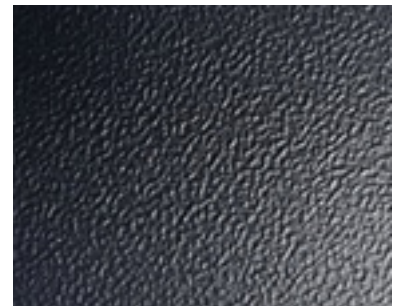
ST19 – DEEPSKIN EXCELLENT

Code: A linear finish with matt-gloss effect creates authenticity. The texture aligns with lightly planked woodgrain decors



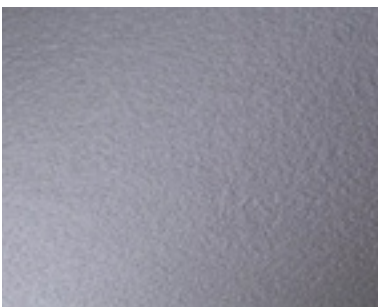
ST20 – METAL BRUSHED

Metallic are popular in on-trend furniture design. ST20 Metal Brush gives pearlescent and metallic decors the look and feel of finely sanded metal



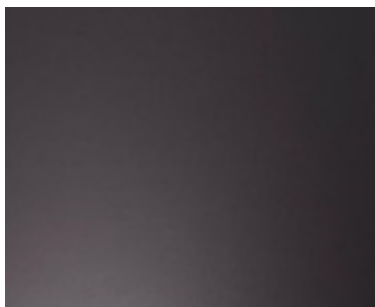
ST7 – SMOOTHTOUCH FINE PEARL

A neutral, usable and rather matt surface



ST76 – MINERAL ROUGH MATT

A flamed & gently brushed natural stone surface inspired it. It can be applied on a number of different stone reproductions, including on slate and marble



ST9 – SMOOTHTOUCH MATT

Used with uni colours and woodgrains offering a very soft and natural feel. This texture supports the trend for matt surfaces

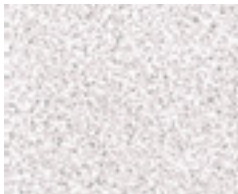
FORMICA FUNDAMENTALS

BLOCK DÉCOR COLOURS

 <p>WHITE</p> <p>Code: 8100</p>	 <p>SHEER WHITE</p> <p>Code: 6463</p>	 <p>SIGNAL WHITE</p> <p>Code: 6464</p>	 <p>DOVE</p> <p>Code: 8084</p>	 <p>RN GREY</p> <p>Code: 2301</p>
 <p>LINEN</p> <p>Code: 8082</p>	 <p>BUTTERMILK</p> <p>Code: 0527</p>	 <p>SUNLIT YELLOW</p> <p>Code: 5901</p>	 <p>BUCKTHORNE</p> <p>Code: 8077</p>	 <p>ROSSO</p> <p>Code: 6472</p>
 <p>FUCHSIA</p> <p>Code: 8081</p>	 <p>ORCHID</p> <p>Code: 5346</p>	 <p>ROYAL BLUE</p> <p>Code: 8183</p>	 <p>TOBAGO BLUE</p> <p>Code: 8079</p>	 <p>POMME</p> <p>Code: 8078</p>
 <p>SILK GREY</p> <p>Code: 6466</p>	 <p>QUICKSILVER</p> <p>Code: 8180</p>	 <p>PLASTER GREY</p> <p>Code: 8085</p>	 <p>COAL GREY</p> <p>Code: 8086</p>	 <p>FLINT GREY</p> <p>Code: 8087</p>
 <p>HEMP</p> <p>Code: 8033</p>	 <p>PLATINUM</p> <p>Code: 8178</p>	 <p>PEWTER GREY</p> <p>Code: 6632</p>	 <p>GRANITE GREY</p> <p>Code: 6467</p>	 <p>JET BLACK</p> <p>Code: 6468</p>

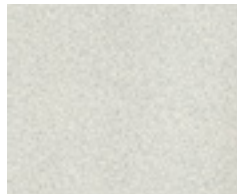


STONE EFFECT DÉCOR COLOURS



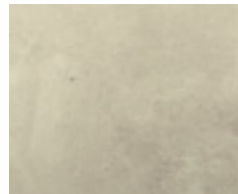
AILSA

Code: 0197



GREY DOTS

Code: 6691



GYPSUM

Code: 8095



CEMENT

Code: 8094



CHARCOAL SPLATTER

Code: 0195

WOOD EFFECT DÉCOR COLOURS



PURE BEECH

Code: 8089



MOUNTAIN MAPLE

Code: 6683



SEN ASH

Code: 7617



SUMMER OAK

Code: 6688



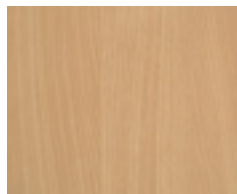
CALM ASH

Code: 8088



BRUNETTE WALNUT

Code: 8092



CLASSIC BEECH

Code: 6684



WARM CHERRY

Code: 8634



DURHAM OAK

Code: 0447



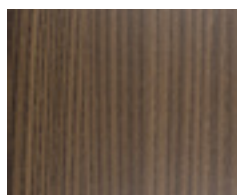
BIELLA WALNUT

Code: 6690



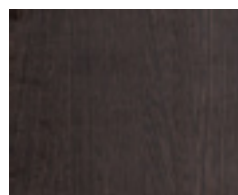
CLASSIC CHERRY

Code: 8090



PITCH WALNUT

Code: 8093



BATU WENGE

Code: 6685

SWATCH SAMPLES
ARE AVAILABLE FOR
EVERY TABLE TOP
TYPE AND DÉCOR
THAT WE
OFFER



CONTRAST ABS EDGING

Contrast ABS edging offers an alternative finish to your top. We have 35 décors available through our catalogue, with hundreds more available through discussion with our Sales Team.

- Option to add an extra dimension to your table top
- 100's of variations to choose from
- 2mm thick impact and scratch resistant
- Easy to clean

BLOCK EDGING COLOURS



TRAFFIC YELLOW
MINIPEARL

Code: 041.3130



MAY GREEN
MINIPEARL

Code: 041.6502



ATLANTIC
MINIPEARL

Code: 041.5420



CHILLI RED
MINIPEARL

Code: 041.4007



BLACK
MINIPEARL

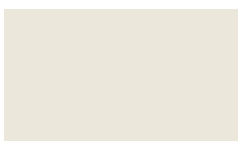
Code: 041.2990



(On the left) two Strata Yellow side chairs (page 153) with a 700mm Square White Tuff Top® Laminate table top (page 20) finished with a Traffic Yellow Minipearl edge on a Phoenix large base (page 97)

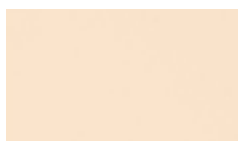
(On the right) two Zest Bright Green side chairs (page 149) with a 700mm Round White Tuff Top® Laminate table top (page 10) finished with a Yellow Green Minipearl edge on a Bistro dining height base (page 98)

PASTEL EDGING COLOURS



WHITE GREY
MICROSTRUCTURE

Code: U41.2445



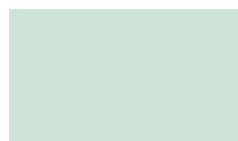
LIGHT VANILLA
MICROSTRUCTURE

Code: 04S.1015



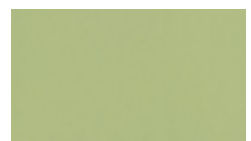
FLAMINGO PINK
MINIPEARL

Code: U41.4274



VELVET GREEN
MINIPEARL

Code: 041.6070



AVOKADO
MICROSTRUCTURE

Code: 04S.6511



CORNERS

Available with Square or Radius Corners



Square Corner



50mm Radius Corner

Three Zest Red side chairs (page 149) with a 1200 x 600mm Alpine White Tuff Top® Laminate table top (page 15) with 50mm radius corners on a Danilo twin columned dining height base (page 73)

METALLIC EDGING COLOURS



ALU CHAMPAGNE
BRUSHED

Code: 047.9252



ALU SILVER
BRUSHED

Code: 047.9230



ALU COPPER
BRUSHED

Code: 047.9258



ALU GOLD
BRUSHED

Code: 047.9259



ALU BRONZE
BRUSHED

Code: 047.9256

WOOD EFFECT EDGING COLOURS



SLICED ASH ACROSS
NATURAL SMOOTH

Code: 045.9762



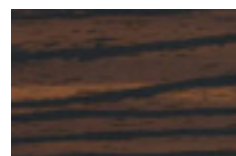
REAL MULTIPLEX
SMOOTH

Code: 095.0770



BARNWOOD
OXIDISED WOOD PORE

Code: 046.9586



SULAWESI MACASSAR
BROWN SMOOTH

Code: 045.7344



BLACK WOODEN
STRUCTURED

Code: 04F.2990

CONTRAST ABS EDGING

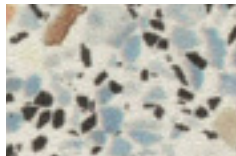
MADE TO ORDER

STONE EFFECT EDGING COLOURS



CARRARA MARBLE
SMOOTH

Code: 045.9746



MOSAIK CORFU
MINIPEARL

Code: 048.9975



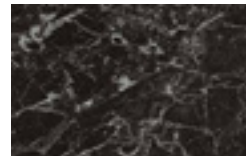
ENGELSBERG
MARBLE MINIPEARL

Code: 048.8596



ANTHRACITE GRANITE
MINIPEARL

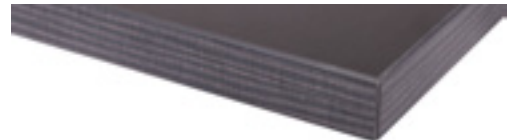
Code: 048.9868



BLACK MARBLE
MINIPEARL

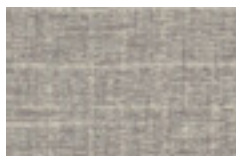
Code: 048.8607

TEXTILE EFFECT EDGING COLOURS



WEAVE SLATE GREY
MINIPEARL

Code: 048.8982



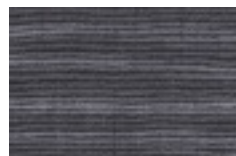
PLATINUM GREY
TWIST SMOOTH

Code: 045.9041



BRUXELLES
MINIPEARL

Code: 048.8972



TEXWOOD BLACK
SMOOTH

Code: 045.9008



MICROPIX NOIR
SMOOTH

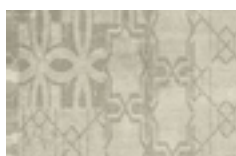
Code: 045.9615

PATTERNED EDGING COLOURS



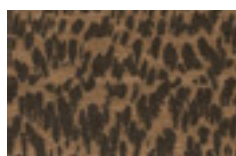
TOUCH OF MADNESS
MINIPEARL

Code: 048.9599



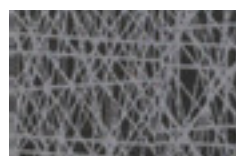
GRAPHIC CONCRETE
SMOOTH

Code: 045.9732



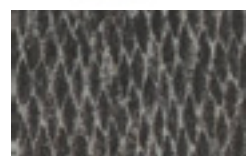
PLANE TREE
SMOOTH

Code: 045.7321



SPIRA GRAU
SMOOTH

Code: 045.9970



REPTILE
MINIPEARL

Code: 048.8751

BESPOKE EDGE PROFILES

WITH PAINTED EDGE

An alternative to ABS edging, why not complete your Bespoke Tuff Top® Laminate table top with one of our 11 alternative painted profile edge options to add a dynamic and unique finishing touch to your table top. Your painted edge can be painted in a solid colour that best matches your chosen surface decor, painted in a contrast colour to compliment the surface décor, or finished as a lacquered polished edge. Contact our amazing sales team today to discuss your requirements.

SEE LATEST OPTIONS
ON OUR WEBSITE



45 DEGREE EDGE PROFILE



47 DEGREE EDGE PROFILE



ARISSED EDGE PROFILE



CONVEX EDGE PROFILE



FULL ROUND
EDGE PROFILE



INCUT EDGE
PROFILE



NEW EDGE -
EDGE PROFILE



PENCIL ROUND
EDGE PROFILE



PENCIL ROUND TOP AND
BOTTOM EDGE PROFILE



SQUARE EDGE
PROFILE



STEP AND ROUND
EDGE PROFILE

MADE TO
ORDER

TUFF TOP® MFC



Tuff Top® MFC table tops are the practical choice for any busy establishment. Budget considerations? Durable, easy to clean and maintain, these table tops are ideal for a wide range of commercial environments.



SWATCH SAMPLES
ARE AVAILABLE FOR
EVERY TABLE TOP
TYPE AND DÉCOR
THAT WE
OFFER



1200 x 700mm Grey Nebraska Oak Tuff Top® MFC top on a Phoenix twin dining height table base (page 97)



Resilient to scratches
and heat resistant
to 90° C



FSC certified
MFC Core



Easy clean, wipeable
surface



5 year structural
warranty



2mm impact resistant
ABS edge as standard



Metal insert service

IN
STOCK &
MADE TO
ORDER

TUFF TOP® MFC

Heat resistant to 90 °C and edged in high quality 2mm impact resistant ABS edging, the Tuff Top® MFC range is perfect for any busy canteen, breakout area, or commercial hospitality environment.




THICKNESS

Available as standard as a 25mm thickness






25MM

STOCKED SIZES (25MM)

TABLE SHAPE	SIZE
	600 x 600mm
	700 x 700mm
	800 x 800mm
	600mm diameter
	700mm diameter
	800mm diameter
	1000mm diameter (white only)
	1200mm diameter (white only)
	1000 X 600mm (white only)
	1200X 700mm
	1200 X 800mm
	1500 X 700mm (white only)

MADE TO ORDER SIZES

TABLE SHAPE	MIN SIZE	MAX SIZE
	500 x 500mm	1200 x 1200mm
	600mm diameter	1200mm diameter
	400 x 300mm	3000 x 1200mm



800mm square Tuff Top® MFC Wenge top on Napa Grey legs (page page 110)



BEECH

Code: MBEE
Décor code: 0381



BLACK

Code: MBLA
Décor code: U999



LIGHT GREY CHICAGO
CONCRETE

Code: MCON
Décor code: F186



GREY NEBRASKA OAK

Code: MNEB
Décor code: H3332



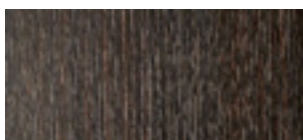
OAK

Code: MOAK
Décor code: H1334



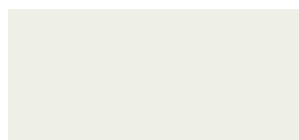
WALNUT

Code: MWAL
Décor code: H3734



WENGE

Code: MWEN
Décor code: H1137



WHITE

Code: MWHI
Décor code: W980

TUFF TOP® SOLID MARBLE & QUARTZ



Tuff Top® Solid Marble Tops are the ultimate statement piece for venues looking to exude luxuriousness and class. Made from real Carrara Marble, a popular choice for table tops due to its durability, elegance, and classic beauty. Each marble top is completely unique.

700 x 600mm rectangle Tuff Top® Solid Marble White Carrara table top





Marine ply fixing board –
easy to screw into



5 year structural
warranty



Unbranded care and
cleaning guide included
with every order



Marble is
100% recyclable



20mm slimline profile



SUITABLE FOR
BOTH INDOOR AND
OUTDOOR USE



TUFF TOP® SOLID MARBLE



Often used in both modern and traditional interior design styles and known for its white or grey background with darker veins running through it. Solid marble is a completely natural product, with each top being unique. Available as standard in White Carrara and in eight sizes. Many more size variations are available through discussion with our Sales Team.




THICKNESS

Available as standard as a 20mm thickness. Table top is 38mm thick when marine ply board is fitted.



600mm square Tuff Top® Solid Marble White Carrara top on a Gold powder coated Danilo square base

STOCKED SIZES (20MM)

TABLE SHAPE	SIZE (20MM)
	600 × 600mm
	700 × 700mm
	800 × 800mm
	600mm diameter
	700mm diameter
	800mm diameter
	700 × 600
	1200 × 700mm


Comes as standard with bullnose edging. Other edging profiles are available upon discussion.



SWATCH SAMPLES
ARE AVAILABLE FOR
EVERY TABLE TOP
TYPE AND DÉCOR
THAT WE
OFFER



BESPOKE TABLE
TOP SHAPES
AVAILABLE





700mm square Tuff Top® Solid Marble White Carrara top on a Madrid flip top base (page 88) and two Paris armchairs (page 159) Product code: MADFTD001-700700MARBLECAR-PARISARM2



1200 x 700mm rectangle Tuff Top® Solid Marble White Carrara top on a Forza twin dining height base (page 67) Product code: BRTD001-1200700MARBLECAR



700mm round Tuff Top® Solid Marble White Carrara top on a Gold Bistro dining height base (page 101). Product Code: GOLDBISD001-700DMARBLECAR



700mm round Tuff Top® Solid Marble White Carrara top on a Danilo round dining height base (page 74). Product code: SSRMD001-700DMARBLECAR

TUFF TOP® SOLID MARBLE & QUARTZ



We've added Verde Rajasthan Green Marble to our Solid Marble offering, a beautiful, distinctive natural stone known for its striking green hues and intricate veining. Additionally, we've added two stunning colours of quartz for our made to order range – Bianco Marmi (White) and Nero Marmi (Black) quartz.




THICKNESS

Each Marble or Quartz 20mm tabletop comes with an 18mm thick Marine Plywood fixing board bonded to the underside using industry standard stone bonding adhesive.



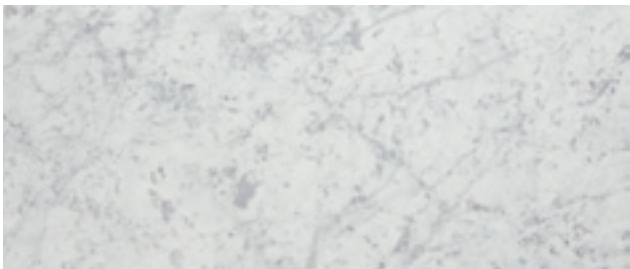
600mm round Tuff Top® Solid Marble Verde Rajistan top on a Bistro base (page 98)

MADE TO ORDER SIZES

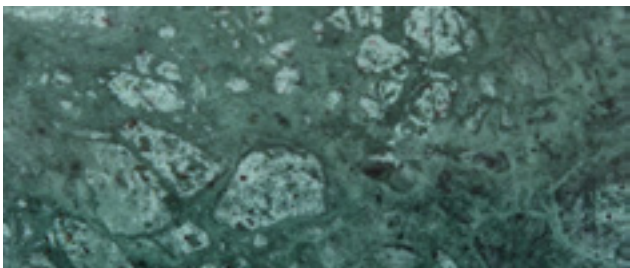
TABLE SHAPE	MIN SIZE	MAX SIZE
	500 x 500mm	800 x 800mm
	500mm diameter	1200mm diameter
	700 x 600mm	1200 x 800mm



MARBLE DÉCOR COLOURS



WHITE CARRARA



VERDE RAJISTAN (GREEN)

TUFF TOP® SOLID QUARTZ

MADE TO
ORDER

QUARTZ DÉCOR COLOURS



BIANCO MARMI (WHITE)



NERO MARMI (BLACK)



600mm round Tuff Top® Solid Quartz Bianco Marmi
top on a Bistro base (page page 98)



600mm square Tuff Top® Solid Quartz Nero Marmi
top on a Bistro base (page page 98)



TUFF TOP® COMPACT LAMINATE



Our Tuff Top® Compact Laminate table tops offer an incredibly durable and modern solution to those venues looking for a sleek minimalist design that can withstand anything that your customers and Mother Nature herself can throw at them.

690 x 690 mm Tuff Top® Compact Laminate top on a Manhattan dining height frame (page 105) with two Fresco armchairs in Grey (page 157). Product Code: MANHAT675D-690690CLTER-FREARMGRY2





Hard wearing surface can accommodate items with a temperature of up to 180 °C



Easy Wipe clean and stain resistant surface – perfect for the current environment



12mm slimline profile



5 year structural warranty



Fixing groove system compatible with all 4 Star shaped table base spiders for ease of assembly

IN STOCK

SUITABLE FOR BOTH INDOOR AND OUTDOOR USE



TUFF TOP® COMPACT LAMINATE






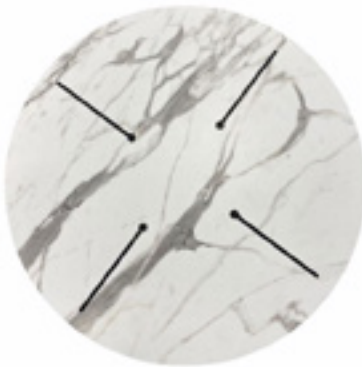
At only 12mm thick these tops have an extremely slim profile, yet with our six stylish colourways they will also lend themselves brilliantly to a large range of interior and exterior themes. Stain resistant, easy to clean and weatherproof, our compact laminate table tops are suitable for any dining or drinking area, inside or out. Available as standard in seven sizes, but bespoke sizes and shapes are available through discussion with our sales team.

THICKNESS

Available as standard as a 12mm thickness



TABLE SHAPE	SIZE (12MM)
	590 x 590mm
	690 x 690mm
	790 x 790mm
	590mm diameter
	690mm diameter
	790mm diameter
	1200 x 690mm



Fixing groove system



590mm round White Marble Tuff Top® on a Madrid flip top dining height base (page 89)
Product code: 590DCLWHIMAR-MADFTD0001

IN STOCK

TUFF TOP® DÉCORS

DÉCOR COLOURS



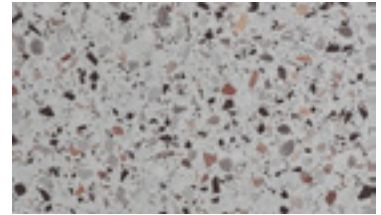
WHITE

Code: CLWHI



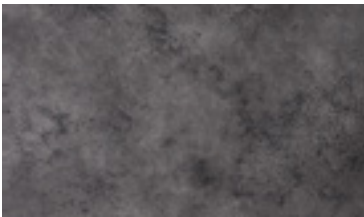
WHITE MARBLE

Code: CLWHIMAR



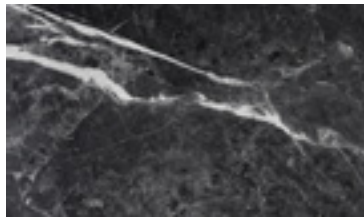
TERAZZO

Code: CLTER



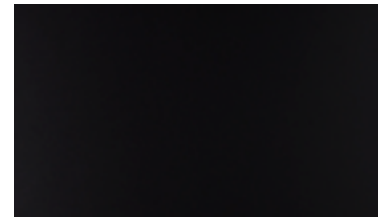
METALLIC
ANTHRACITE

Code: CLMETANT



MARQUINA
MARBLE

Code: CLMARMAR



BLACK

Code: CLBLA

Free samples available of all decors.



690mm square Metallic Anthracite Tuff Top® Compact Laminated table top with a Continental 4 leg base (page 93) and two Paris armchairs (page 159)
Product code: CON4-690690CLMETANT-PARISARM2

TUFF TOP® SOLID WOOD



Tuff Top® Solid Wood table tops are the perfect complement to those venues looking for high quality wooden tops to complete their desired design theme.



SWATCH SAMPLES
ARE AVAILABLE FOR
EVERY TABLE TOP
TYPE AND DÉCOR
THAT WE
OFFER



1200 x 700mm Wenge Tuff Top® Solid Wood top on a Phoenix twin dining height table base (page 97)



Durable construction, with strengthening bars to ensure the natural wood does not lose its shape



Can be stained in your choice of colour



Solid wood – so can be refinished in the future



PU lacquer finish for stain resistance and easy cleaning



5 year structural warranty



Bespoke edge shape

IN
STOCK &
MADE TO
ORDER

STOCKED DÉCORS & SIZES

IN STOCK



Oak Tuff Top® Solid Wood top on a Forza dining height table base (page 67) with two Bourbon Tabasco side chairs (page 128)
Product code: BSSD001-700700SWOAK-BOUSIDTAB

STOCKED DÉCORS (25MM)

We hold two of our most popular décors in stock, available for same day despatch.



OAK

Colour code: SWOAK






WALNUT

Colour code: SWWAL

STOCKED SIZES (25MM)

Round, Square and Rectangle shapes, with one size variation for each décor.

TABLE SHAPE	SIZE
	700 x 700mm
	700mm diameter
	1200 x 700mm



Oak Tuff Top® Solid Wood top on Hairpin legs (page 108)

MADE TO ORDER DÉCORS & SIZES

MADE TO
ORDER

Our Tuff Top® Solid Wood tops will add a touch of class to any pub, restaurant, café, club, or hotel, and can even be colour stained upon request to match any pre-existing stain colours that you may already have. Available in three different thicknesses and a wide array of sizes, there's a solid wood top to suit any requirement.

THICKNESS

Available in 25mm, 34mm or 50mm



25MM
(STANDARD)



34MM






50MM



700mm round Tuff Top® Solid Wood Wenge top on an Anchor black floor fixed dining height base (page 85).
Product code: ANCBD001-700D TSA25WEN

MADE TO ORDER SIZES

TABLE SHAPE	MIN SIZE	MAX SIZE
	400 x 400mm	1500 x 1500mm
	400mm diameter	1500mm diameter
	900 x 350mm	2400 x 1500mm



STOCK
DÉCOR



OAK



GOLDEN OAK



MAHOGANY



WENGE

STOCK
DÉCOR



WALNUT



CLEAR LACQUER



LIMED ASH



RAW

TUFF TOP® SOLID WOOD



BLACK



BEIGE GREY



MEDIUM GREY



FUMED GREY



WHITE

AVAILABLE IN
SQUARE, ROUND
& RECTANGULAR
SHAPES



700mm round Tuff Top® Solid Wood Oak table top on a Forza round dining height base (page 68) with two Bourbon side chairs in Aberdeen faux suede (page 128). Product code: BRSD001-700DSWOAK-BOUSIDABE2

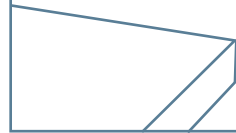


Forza small round dining height base (page 68)
with 700mm round Wenge Tuff Top® Solid Wood top

EDGE PROFILES

Finished as standard with a square edge, why not complete your Tuff Top® Solid Wood table top with one of our 10 alternative profile edge options to add a dynamic and unique finishing touch. Create a stunning and eye catching design that serves as a talking point for all your customers.

SEE LATEST OPTIONS
ON OUR WEBSITE



The square edge is the standard profile, or choose from one of our 10 alternative edges below:



SQUARE EDGE



ARISSED EDGE



PENCIL ROUND EDGE



PENCIL ROUND
TOP AND BOTTOM EDGE



FULL ROUND EDGE



CONVEX EDGE



STEP AND ROUND EDGE



INCUT EDGE



NEW EDGE



47 DEGREE EDGE



45 DEGREE EDGE

CALL US TODAY



TUFF TOP® RUSTIC WOOD



Made To Order Tuff Top® Rustic Wood table tops are the perfect complement to those venues looking for tops where the natural characteristics of the wood are appreciated as a truly charismatic feature. 34mm thick and available in nine different sizes (with many more sizes available through discussion with our sales team), our Tuff Top® Rustic Wood tops are perfect for those venues looking to create the Industrial vibe.

Our Tuff Top® Rustic Wood table tops are made to embrace the natural characteristics of the real wood that they are made from. Each table is unique, with the knots and grooves of the wood still present as a feature, providing you with a stunning finish. If you prefer a smooth natural wood finish then please see our Tuff Top® Solid Wood range (page 40).





Durable construction, with Strengthening bars to ensure the natural wood does not lose its shape



Can be stained in your choice of colour



Solid wood – so can be refinished in the future



PU lacquer finish for stain resistance and easy cleaning



5 year structural warranty for peace of mind

**MADE TO
ORDER**

SWATCH SAMPLES
ARE AVAILABLE FOR
EVERY TABLE TOP
TYPE AND DÉCOR
THAT WE
OFFER






700mm square 34mm thick Rainbow Pine Tuff Top®
Rustic Wood top with four Hairpin legs (page 109)

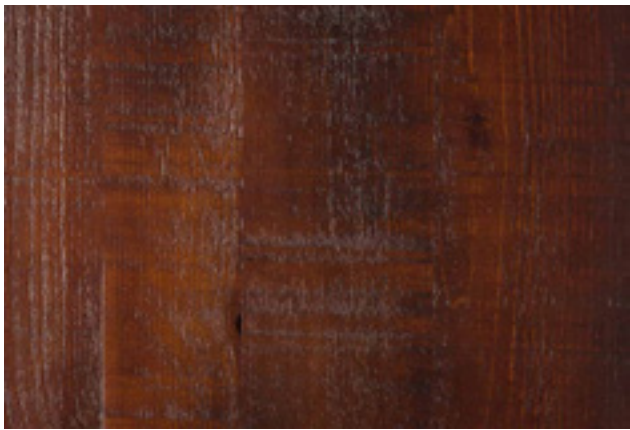
TUFF TOP® RUSTIC WOOD

34mm thick and available in nine different sizes (with many more sizes available through discussion with our sales team), our Tuff Top® Rustic Wood tops are perfect for those venues looking to create the Industrial vibe.



TABLE SHAPE	SIZE
	600mm Square
	700mm Square
	800mm Square
	600mm Round
	700mm Round
	800mm Round
	1100 x 700mm
	1200 x 700mm
	1200 x 800mm

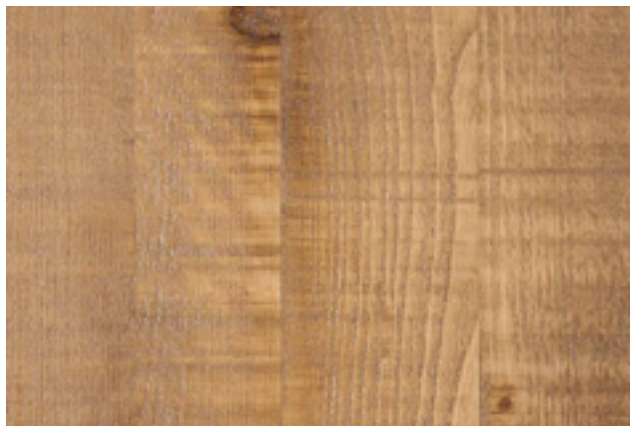
Other bespoke sizes are available.



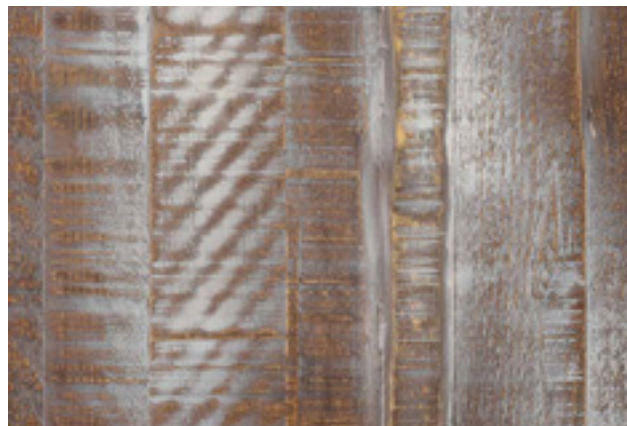
BARREL



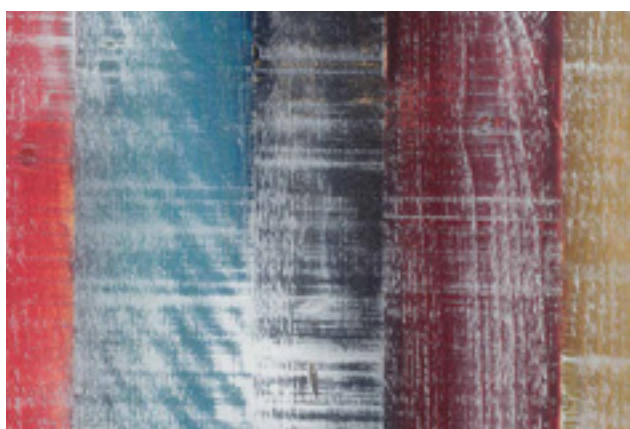
DRIFTWOOD



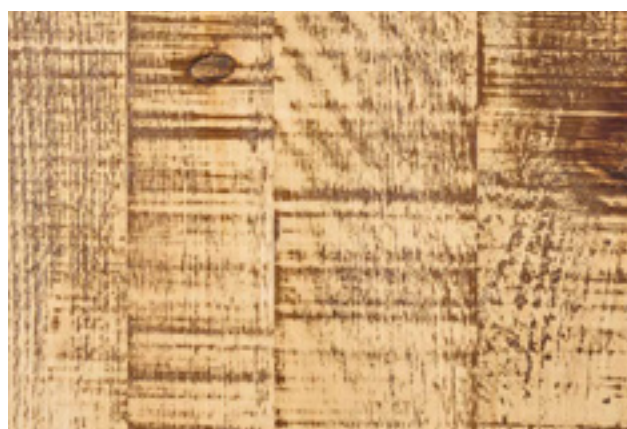
INDUSTRIAL PINE



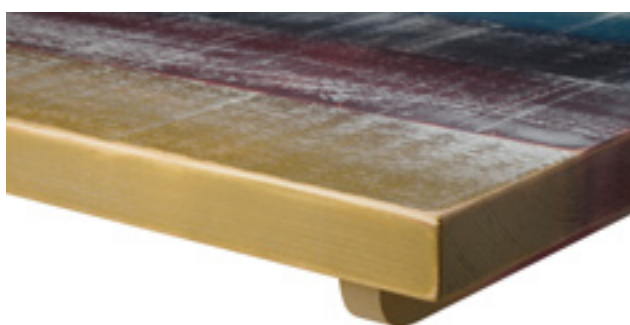
JETTY



RAINBOW PINE



STRIPPED PINE



WERZALIT TABLE TOPS



The Werzalit brand has been established for over 90 years and are one of our top choices for outdoor commercial table tops. Werzalit outdoor table tops are the standard for anyone looking for weatherproof and UV resistant dining tables. We offer over 50 different decors (six from stock) and 15 different sizes, meaning you can achieve any look and meet any contract seating criteria that your commercial hospitality venue may have. Add to that our 5 year structural warranty, and you'll see that the Werzalit outdoor table tops are brilliant for any pub, commercial hospitality venue, canteen or breakout room where a quality top suitable for any environment, indoors or outdoors, is needed.

SUITABLE FOR
BOTH INDOOR AND
OUTDOOR USE





Scratch, and impact resistant, heat resistant to 180 °C making them a highly durable option for busy environments



Easy clean, wipeable surface



Weatherproof and UV resistant to suit any environment, outdoors and indoors



FSC Certified, with a 100% recycled core



5 year warranty for peace of mind



Molded Metal Edging available



Metal insert service




werzalit®
since 1923.

Werzalit 800mm square
White stocked tops on
Madrid flip top bases
(page 89) with Red and
Anthracite Strata chairs
(page 153)

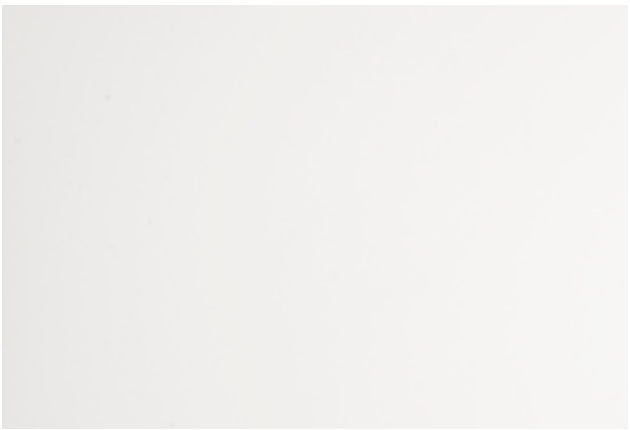
IN
STOCK &
MADE TO
ORDER

STOCK TABLE TOPS

We hold stock of six of the best selling decors, available in seven sizes for Same Day Despatch.

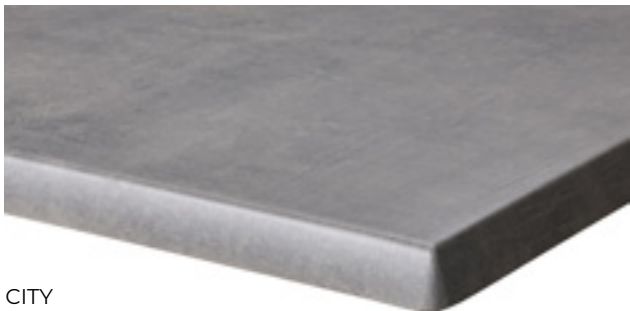
TABLE SHAPE	SIZE (27MM DEPTH)
	600mm Square
	700mm Square
	800mm Square*
	600mm Round
	700mm Round
	800mm Round*
	1100 x 700mm*

*Being phased out as a stocked size



WHITE

Product code: WZ001



CITY

Product code: WZ029

werzalit®
since 1923.

IN STOCK



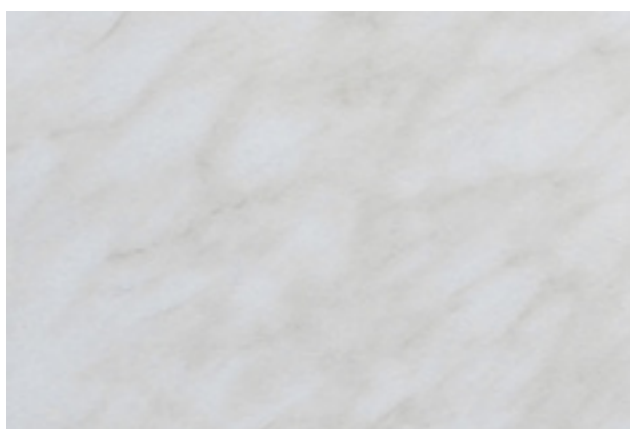
BLACK

Product code: WZ055



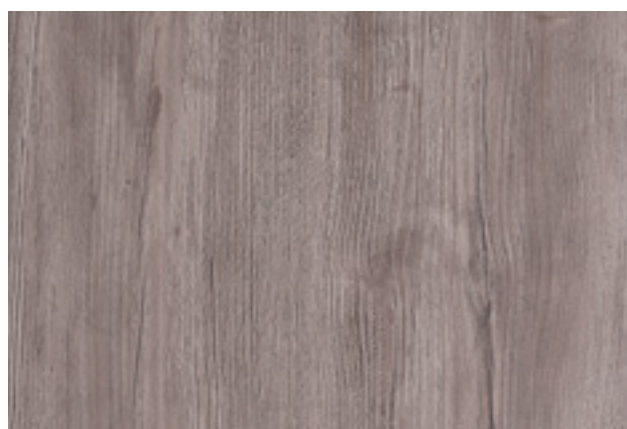
ARIZONA

Product code: WZ119



MARBLE DE GENES

Product code: WZ121






PONDEROSA GREY

Product code: WZ179





Werzalit's Performer Express and Performer Décors are available through our Made To Order bespoke service – lead times as stated below. *Minimum order quantity of six tops per size and decor combination.

TABLE SHAPE	SIZE	PERFORMER EXPRESS LEAD TIME	PERFORMER LEAD TIME
	600mm Square	3 weeks	4 weeks
	700mm Square		
	800mm Square		
	900mm Square	4 weeks	
	600mm Round	3 weeks	4 weeks
	700mm Round		
	800mm Round	4 weeks	
	900mm Round		
	400mm Round (Stool)		
	1050mm Round	5 weeks	5 weeks
	1200mm Round		
	1100 x 700mm	4 weeks	4 weeks
	1200 x 800mm		
	700 x 600mm	5 weeks	5 weeks
	800 x 600mm		



Leadtimes are approximate and are subject to change.

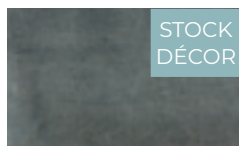


PERFORMER EXPRESS DÉCORS



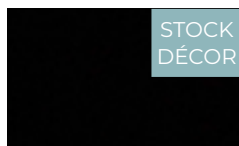
WHITE

Code: WZ001



CITY

Code: WZ029



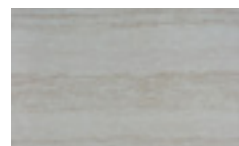
BLACK

Code: WZ055



COLORADO

Code: WZ033



TRAVERTIN

Code: WZ034



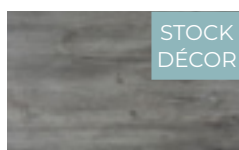
ARIZONA

Code: WZ119



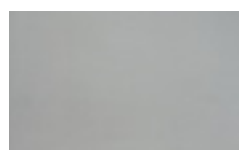
MARBLE DE GENES

Code: WZ121



PONDEROSA GREY

Code: WZ179



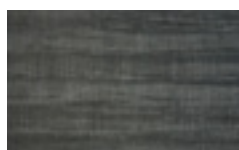
ALU

Code: WZ056



INDIANA

Code: WZ057



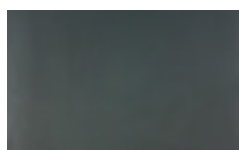
PALISSADE GREY

Code: WZ065



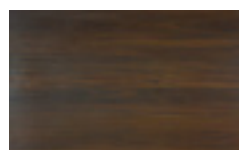
FACTORY

Code: WZ083



ANTHRACITE

Code: WZ084



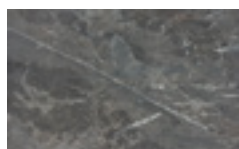
WALNUT

Code: WZ116



EX WORKS

Code: WZ122



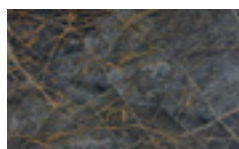
MARBLE SICILE

Code: WZ144



PALISSADE WHITE

Code: WZ150



MARBLE SIENNA

Code: WZ174



PONDEROSA WHITE

Code: WZ178



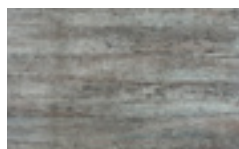
MARBLE ALMERIA

Code: WZ209



MARBLE MARQUINA

Code: WZ210



MONTPELLIER

Code: WZ214



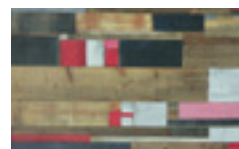
RUST BROWN

Code: WZ223



KROMY ROUGE

Code: WZ261



KBANA ROUGE

Code: WZ271



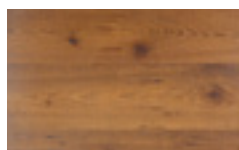
FINDUS

Code: WZ295



FINDUS GREY

Code: WZ296



PINIE

Code: WZ321



KANSAS

Code: WZ508



NEW BOSTON

Code: WZ520

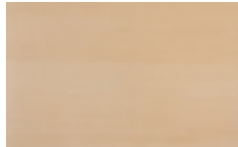
PERFORMER DÉCORS

Minimum order quantity of 6 tops per size and décor.



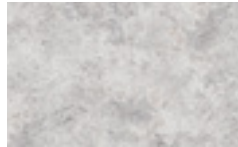
MARMOR BEIGE

Code: WZ009



BEECH

Code: WZ019



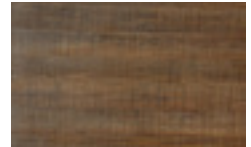
SMOKEY WHITE

Code: WZ030



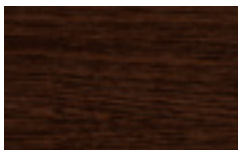
SANDSTONE

Code: WZ043



PALISSADE BOIS

Code: WZ096



WENGE

Code: WZ103



OAK MILLED

Code: WZ170



KBANA TAUPE

Code: WZ211



PLANK BLUE

Code: WZ264



PLANK RED

Code: WZ266



LAGOS

Code: WZ504



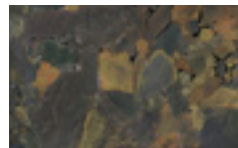
ENEA

Code: WZ505



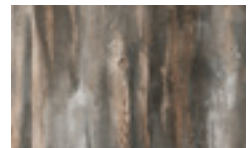
VERONA

Code: WZ506



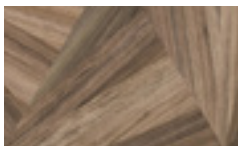
INFINITY BROWN

Code: WZ507



SHANIKO

Code: WZ509



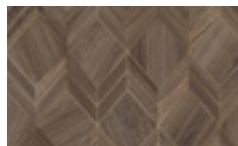
CHADNA

Code: WZ510



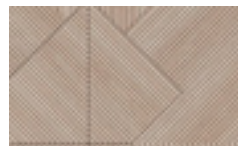
KAPEA

Code: WZ511



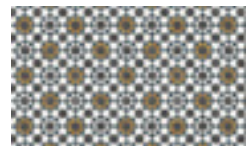
LIAM GOLD

Code: WZ512



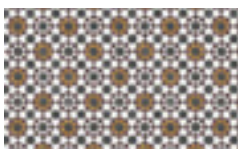
TRIANA

Code: WZ513



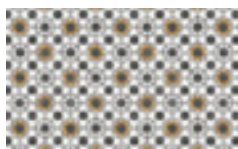
FEZ BLUE

Code: WZ514



FEZ RED

Code: WZ515



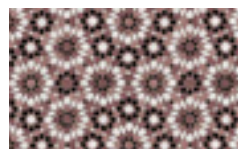
FEZ WHITE

Code: WZ516



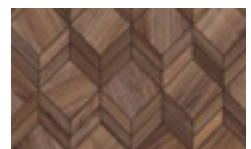
KALLIMA BLUE

Code: WZ517



KALLIMA RED

Code: WZ518



LIAM

Code: WZ519



SYLVA

Code: WZ522



AZRAK

Code: WZ523



THOR

Code: WZ525

METAL RINGS

werzalit
since 1923

MADE TO
ORDER

Why not complete your Werzalit bespoke table top with a moulded metal edging ring option. Available in either real brass or stainless steel, the moulded metal edging is available on any 600mm or 700mm round table tops within our Performer Express or Performer Décor ranges.



700mm round Werzalit Marble Sienna top
on a Bistro gold dining height base (page 100)
with a brass metal ring
Product Code: 700DWZ174BRASS-GOLDBIS4D001





Madrid flip top table bases shown (page 89)

TABLE BASES

THE FORZA BASE



The Forza range - the timeless design of the Forza, with its classic, slimline profile make this range an easy inclusion into any restaurant, pub, bar, café, canteen or breakout area. With the cast iron base plate and spider, and strong steel column, the powder coated, slightly textured finish on the Forza means this range is highly resistant to knocks

and scratches and is very easy to clean. With both Round and Square versions available the Forza range comprises of nine different base plate sizes. And with three height options available - Coffee, Dining and Poseur - the Forza range will fit nearly any spacial and design requirement.

Forza small round dining height table base with a 700mm round Tuff Top® Solid Wood table top in Wenge (page 29)



Strong, sturdy, durable and heavy single columned base with Anti Spin mechanism



Powder coated finish means this is knock and scratch resistant, and easy to clean



Classic black design, fits in a range of different social settings



Adjustable feet



5 year structural warranty



Metal insert service



Can be cut down



Powder coating service available

IN STOCK

FORZA SQUARE

Forza Square black powder coated cast iron table base. A timeless design with a slimline profile, the Forza Square is an extremely popular and affordable option suitable for all types of hospitality or office based dining venue. A powder coated finish means this base is highly resistant to knocks and scratches and is easy to clean. The Forza Square range is available in five sizes including the rectangular single pedestal and twin columned bases, as well as three heights - Coffee, Dining and Poseur.

Colour	Black
Finish	Black powder coated
Shape	Square, rectangle
Base group height	Coffee, dining, poseur
Size	extra large, single pedestal, medium, small, twin
Stocked or made to order	Stocked product



Forza Square medium dining height base with a 700mm Square Oak Tuff Top® Laminate top (page 10)
Product code: BSSD001700700LOAK



SMALL COFFEE

Max top size: ● 1000mm ■ 700x700mm
Base dims: W400mm x D400mm
Base height: 480mm | Weight: 13.9kg

Product code: BSSC001



SMALL DINING

Max top size: ● 1000mm ■ 700x700mm
Base dims: W400mm x D400mm
Base height: 730mm | Weight: 14.9kg

Product code: BSSD001



SMALL POSEUR

Max top size: ● 1000mm ■ 700x700mm
Base dims: W400mm x D400mm
Base height: 1050mm | Weight: 16.4kg

Product code: BSSP001



MEDIUM COFFEE

Max top size: ● 1200mm ■ 900x900mm
Base dims: W450mm x D450mm
Base height: 480mm | Weight: 15.6kg

Product code: BSMC001



MEDIUM DINING

Max top size: ● 1200mm ■ 900x900mm
Base dims: W450mm x D450mm
Base height: 730mm | Weight: 16.6kg

Product code: BSMD001



MEDIUM POSEUR

Max top size: ● 1200mm ■ 900x900mm
Base dims: W450mm x D450mm
Base height: 1050mm | Weight: 18.1kg

Product code: BSMP001



EXTRA LARGE COFFEE

Max top size: ● 1500mm ■ 1200x1200mm
Base dims: W600mm x D600mm
Base height: 480mm | Weight: 25.8kg

Product code: BSXC001



EXTRA LARGE DINING

Max top size: ● 1500mm ■ 1200x1200mm
Base dims: W600mm x D600mm
Base height: 730mm | Weight: 26.8kg

Product code: BSXD001



EXTRA LARGE POSEUR

Max top size: ● 1500mm ■ 1200x1200mm
Base dims: W600mm x D600mm
Base height: 1050mm | Weight: 28.3kg

Product code: BSXP001



SINGLE PEDESTAL COFFEE

Max top size: ■ 1200x800mm
Base dims: W600mm x D400mm
Base height: 480mm | Weight: 18.8kg

Product code: BRC001



SINGLE PEDESTAL DINING

Max top size: ■ 1200x800mm
Base dims: W600mm x D400mm
Base height: 730mm | Weight: 19.7kg

Product code: BRD001



SINGLE PEDESTAL POSEUR

Max top size: ■ 1200x800mm
Base dims: W600mm x D400mm
Base height: 1050mm | Weight: 20.9kg

Product code: BRP001



TWIN COFFEE

Max top size: ■ 1500x900mm
Base dims: W750mm x D400mm
Base height: 480mm | Weight: 27kg

Product code: BRTC001



TWIN DINING

Max top size: ■ 1500x900mm
Base dims: W750mm x D400mm
Base height: 730mm | Weight: 30kg

Product code: BRTD001



TWIN POSEUR

Max top size: ■ 1500x900mm
Base dims: W750mm x D400mm
Base height: 1050mm | Weight: 31.2kg

Product code: BRTP001

FORZA ROUND

The Forza Round black powder coated cast iron table base, with its slimline profile and classic design make it an easy inclusion into any hospitality or office based dining environment. A powder coated finish means this base is highly resistant to knocks and scratches and is easy to clean. The Forza Round is available in four different sizes and in three heights - Coffee, Dining and Poseur.

Colour	Black
Finish	Black powder coated
Shape	Round
Base group height	Coffee, dining, poseur
Size	Large, medium large, medium, small
Stocked or made to order	Stocked product



Forza Round medium dining height base with a 700mm round Beech Tuff Top® MFC (page 29)
Product code: BRSD001700DMBEE



SMALL COFFEE

Max top size: ● 700mm ■ 600x600mm
Base dims: W400mm x D400mm
Base height: 480mm | Weight: 11.1kg

Product code: BRSC001



SMALL DINING

Max top size: ● 700mm ■ 600x600mm
Base dims: W400mm x D400mm
Base height: 730mm | Weight: 12kg

Product code: BRSD001



SMALL POSEUR

Max top size: ● 700mm ■ 600x600mm
Base dims: W400mm x D400mm
Base height: 1050mm | Weight: 13.2kg

Product code: BRSP001



MEDIUM COFFEE

Max top size: ● 900mm ■ 700x700mm
Base dims: W450mm x D450mm
Base height: 480mm | Weight: 13.2kg

Product code: BRMC001



MEDIUM DINING

Max top size: ● 900mm ■ 700x700mm
Base dims: W450mm x D450mm
Base height: 730mm | Weight: 14.1kg

Product code: BRMD001



MEDIUM POSEUR

Max top size: ● 900mm ■ 700x700mm
Base dims: W450mm x D450mm
Base height: 1050mm | Weight: 15.3kg

Product code: BRMP001



MEDIUM LARGE COFFEE

Max top size: ● 1000mm ■ 800x800mm
Base dims: W500mm x D500mm
Base height: 480mm | Weight: 15.2kg

Product code: BRMLC001



MEDIUM LARGE DINING

Max top size: ● 1000mm ■ 800x800mm
Base dims: W500mm x D500mm
Base height: 730mm | Weight: 16.1kg

Product code: BRMLD001



MEDIUM LARGE POSEUR

Max top size: ● 1000mm ■ 800x800mm
Base dims: W500mm x D500mm
Base height: 1050mm | Weight: 20.9kg

Product code: BRMLP001



LARGE COFFEE

Max top size: ● 1300mm ■ 1000x1000mm
Base dims: W600mm x D600mm
Base height: 480mm | Weight: 21.1kg

Product code: BRLC001



LARGE DINING

Max top size: ● 1300mm ■ 1000x1000mm
Base dims: W600mm x D600mm
Base height: 730mm | Weight: 22kg

Product code: BRLD001



LARGE POSEUR

Max top size: ● 1300mm ■ 1000x1000mm
Base dims: W600mm x D600mm
Base height: 1050mm | Weight: 23.2kg

Product code: BRLP001

THE DANILO BASE



The Danilo range - the sleek, elegant and classic design of the Danilo make it an easy inclusion into any Restaurant, Pub, Bar, Café, Canteen or Breakout area. The Danilo has a steel column, and cast iron plate at the core of the base, with a stainless steel plate on top. The striking stainless steel finish brings a modern and clean dynamic to your dining area, with the brushed steel finish bouncing light and echoing colours to perfectly compliment and accentuate it's location. With both round and square

versions available the Danilo range comprises of six different base plate sizes. And with three height options available - Coffee, Dining and Poseur - the Danilo range will fit nearly any spacial and design requirement.

Danilo twin dining height base with a bespoke 1200 x 600mm Alpine White Tuff Top® Laminate with 50mm radius corners (page 15) and three Zest Red chairs (page 149)



Strong, sturdy, durable and heavy single columned base with Anti Spin mechanism



Modern stainless steel finish can help accentuate and reflect a venues colour scheme



Heavy cast iron base plate provides extra weight and durability



Adjustable feet



5 year structural warranty



Metal insert service



Can be cut down



Powder coating service available

IN STOCK

DANILO SQUARE

The Danilo Square brushed stainless steel table base, with its slimline profile and timeless design make it an easy inclusion into any hospitality or office based dining environment. With options to compliment any of the square or rectangle table tops, the brushed steel finish means this base will accentuate any colour or lighting theme the location offers. The Danilo Square is available in four different sizes and in three heights - Coffee, Dining and Poseur.

Colour	Brushed stainless steel
Finish	Brushed stainless steel
Shape	Square, rectangle
Base group height	Coffee, dining, poseur
Size	Large, medium, single pedestal, twin
Stocked or made to order	Stocked product



Danilo twin dining height base with a 1200 x 700mm White Tuff Top® Laminate (page 10) and four Strata Jute chairs (page 153) Product code: SSRTD001-1200700LWHI-STRJUT4



MEDIUM COFFEE

Max top size: ● 1000mm ■ 800x800mm
Base dims: W400mm x D400mm
Base height: 480mm | Weight: 14.7kg

Product code: SSSMC001



MEDIUM DINING

Max top size: ● 1000mm ■ 800x800mm
Base dims: W400mm x D400mm
Base height: 730mm | Weight: 15.7kg

Product code: SSSMD001



MEDIUM POSEUR

Max top size: ● 1000mm ■ 800x800mm
Base dims: W400mm x D400mm
Base height: 1050mm | Weight: 16.9kg

Product code: SSSMP001



LARGE COFFEE

Max top size: ● 1200mm ■ 1000x1000mm
Base dims: W500mm x D500mm
Base height: 480mm | Weight: 19.3kg

Product code: SSSLC001



LARGE DINING

Max top size: ● 1200mm ■ 1000x1000mm
Base dims: W500mm x D500mm
Base height: 730mm | Weight: 20.3kg

Product code: SSSLD001



LARGE POSEUR

Max top size: ● 1200mm ■ 1000x1000mm
Base dims: W500mm x D500mm
Base height: 1050mm | Weight: 21.5kg

Product code: SSSLP001



SINGLE PEDESTAL COFFEE

Max top size: ■ 1200x800mm
Base dims: W600mm x D400mm
Base height: 480mm | Weight: 21.2kg

Product code: SSRSC001



SINGLE PEDESTAL DINING

Max top size: ■ 1200x800mm
Base dims: W600mm x D400mm
Base height: 730mm | Weight: 22.2kg

Product code: SSRSD001



SINGLE PEDESTAL POSEUR

Max top size: ■ 1200x800mm
Base dims: W600mm x D400mm
Base height: 1050mm | Weight: 23.4kg

Product code: SSRSP001



TWIN COFFEE

Max top size: ■ 1500x900mm
Base dims: W750mm x D400mm
Base height: 480mm | Weight: 26.8kg

Product code: SSRTC001



TWIN DINING

Max top size: ■ 1500x900mm
Base dims: W750mm x D400mm
Base height: 730mm | Weight: 27.8kg

Product code: SSRTD001



TWIN POSEUR

Max top size: ■ 1500x900mm
Base dims: W750mm x D400mm
Base height: 1050mm | Weight: 29kg

Product code: SS RTP001

DANILO ROUND

The Danilo Round brushed stainless steel table base, with its slimline profile and classic design make it an easy inclusion into any hospitality or office based dining environment. a perfect pedestal for any of our round table tops, the brushed steel finish means this base will accentuate any colour or lighting theme the location offers. The Danilo Round is available in two different sizes and in three heights - Coffee, Dining and Poseur.

Colour	Brushed stainless steel
Finish	Brushed stainless steel
Shape	Round
Base group height	Coffee, dining, poseur
Size	Large, medium
Stocked or made to order	Stocked product



Danilo Round medium dining height base with a 600mm Round White Tuff Top® MFC (page 29) and two Strata Yellow chairs (page 150)
Product code: SSRMD001-600DMWHI-STRYEL2



MEDIUM COFFEE

Max top size: ● 900mm ■ 700x700mm
Base dims: W450mm x D450mm
Base height: 480mm | Weight: 14.7kg

Product code: SSRMC001



MEDIUM DINING

Max top size: ● 900mm ■ 700x700mm
Base dims: W450mm x D450mm
Base height: 730mm | Weight: 15.4kg

Product code: SSRMD001



MEDIUM POSEUR

Max top size: ● 900mm ■ 700x700mm
Base dims: W450mm x D450mm
Base height: 1050mm | Weight: 16.5kg

Product code: SSRMP001



LARGE COFFEE

Max top size: ● 1200mm ■ 1100x1100mm
Base dims: W600mm x D600mm
Base height: 480mm | Weight: 22kg

Product code: SSRLC001



LARGE DINING

Max top size: ● 1200mm ■ 1100x1100mm
Base dims: W600mm x D600mm
Base height: 730mm | Weight: 22.7kg

Product code: SSRLD001



LARGE POSEUR

Max top size: ● 1200mm ■ 1100x1100mm
Base dims: W600mm x D600mm
Base height: 1050mm | Weight: 23.8kg

Product code: SSRLP001

THE QUATTRO BASE



Sturdy cast iron table base in a popular pyramid style, the Quattro will provide a strong linear style to compliment a multitude of settings. The Quattro base is an ideal and easy inclusion into any restaurant, pub, bar, or café environment.

Quattro twin dining height base with a 1200 x 700mm White Tuff Top® Laminate stocked top (page 10) and four Light Grey Strata chairs (page 153)



Strong, sturdy, durable and heavy single columned base with Anti Spin mechanism



Adjustable feet



Metal insert service



Powder coated finish means this is knock and scratch resistant, and easy to clean



5 year structural warranty



Can be cut down



Popular black design, fits in a range of different social settings



Powder coating service available

IN STOCK

THE QUATTRO

Available in three sizes including the rectangular single pedestal and twin columned bases, as well as three heights - Coffee, Dining and Poseur.

Colour	Black
Finish	Dimpled / glossy
Shape	Square, rectangle
Base group height	Coffee, dining, poseur
Size	Medium, single pedestal, twin
Stocked or made to order	Stocked product



Quattro twin dining height base with an 1100 x 700mm stocked Black Werzalit top (page 57) and four Green Strata chairs (page 153)



MEDIUM COFFEE

Max top size: ● 1000mm ■ 800x800mm
Base dims: W430mm x D430mm
Base height: 480mm | Weight: 14.5kg

Product code: BPMC001



MEDIUM DINING

Max top size: ● 1000mm ■ 800x800mm
Base dims: W430mm x D430mm
Base height: 730mm | Weight: 15.5kg

Product code: BPMD001



MEDIUM POSEUR

Max top size: ● 1000mm ■ 800x800mm
Base dims: W430mm x D430mm
Base height: 1050mm | Weight: 16.9kg

Product code: BPMP001



SINGLE PEDESTAL COFFEE

Max top size: ■ 1200x800mm
Base dims: W550mm x D400mm
Base height: 480mm | Weight: 18.5kg

Product code: BPRSC001



SINGLE PEDESTAL DINING

Max top size: ■ 1200x800mm
Base dims: W550mm x D400mm
Base height: 730mm | Weight: 19.5kg

Product code: BPRSD001



SINGLE PEDESTAL POSEUR

Max top size: ■ 1200x800mm
Base dims: W550mm x D400mm
Base height: 1050mm | Weight: 21kg

Product code: BPRSP001



TWIN COFFEE

Max top size: ■ 1600 x 900mm
Base dims: W800mm x D400mm
Base height: 480mm | Weight: 31.1kg

Product code: BPTC001



TWIN DINING

Max top size: ■ 1600 x 900mm
Base dims: W800mm x D400mm
Base height: 730mm | Weight: 33.1kg

Product code: BPTD001



TWIN POSEUR

Max top size: ■ 1600 x 900mm
Base dims: W800mm x D400mm
Base height: 1050mm | Weight: 35.9kg

Product code: BPTP001

THE CAVA BASE



The Cava Round Champagne toned brushed stainless steel table base, with its slimline profile and classic design make it an elegant inclusion into any hospitality or social based dining environment. With it's luscious champagne tones the Cava is perfect base to display any of our round table tops.

Cava dining height base with a 800mm diameter Anthracite Pietra Grigia Tuff Top® Laminate top (available upon discussion)



Strong, sturdy, durable and heavy single columned base with anti-spin mechanism



Modern champagne toned stainless steel finish – accentuates and reflects lighting



Heavy cast iron base plate provides extra weight and durability



Adjustable feet



5 year structural warranty



Metal insert service



Powder coating service available



Can be cutdown



The brushed steel finish means the Cava base will accentuate any lighting theme the location offers. The Cava round is available in two different sizes and in three heights – Coffee, Dining and Poseur..

Colour	Champagne
Finish	Smooth
Shape	Round
Base group height	Coffee, dining, poseur
Size	Large, medium
Stocked or made to order	Stocked product



MEDIUM COFFEE

Max top size: ● 900mm ■ 700x700mm
Base dims: W450mm x D450mm
Base height: 480mm | Weight: 14.7kg

Product code: CGRMC001



MEDIUM DINING

Max top size: ● 900mm ■ 700x700mm
Base dims: W450mm x D450mm
Base height: 730mm | Weight: 15.4kg

Product code: CGRMD001



MEDIUM POSEUR

Max top size: ● 900mm ■ 700x700mm
Base dims: W450mm x D450mm
Base height: 1050mm | Weight: 16.5kg

Product code: CGRMP001



LARGE COFFEE

Max top size: ● 1200mm ■ 1100x1100mm
Base dims: W600mm x D600mm
Base height: 480mm | Weight: 22kg

Product code: CGRLC001



LARGE DINING

Max top size: ● 1200mm ■ 1100x1100mm
Base dims: W600mm x D600mm
Base height: 730mm | Weight: 22.7kg

Product code: CGRLD001



LARGE POSEUR

Max top size: ● 1200mm ■ 1100x1100mm
Base dims: W600mm x D600mm
Base height: 1050mm | Weight: 23.8kg

Product code: CGRLP001

THE MANOR BASE



Solid and stately, the Manor base evokes a subtle opulence, adding its own touch to fine dining. With its heavy cast iron base plate and column, the Manor is a perfect inclusion into any dining environment looking to add a decorative, stylish, classy, yet incredibly durable touch to their dining or drinking experience.

Manor medium poseur height base with a 600mm diameter Grey Chicago 25mm thick Tuff Top® Laminate top with Champagne metallic ABS edging (page 23)



Strong, sturdy and heavy single columned base, provides more leg room around table



Powder coated finish means knock and scratch resistant in busy environments



Easy to clean



Adjustable feet



5 year structural warranty



Metal insert service



Powder coating service available



IN STOCK

Available in two base plate sizes and as a dining height or poseur height.

Colour	Black
Finish	Black powder coated
Shape	Round
Base group height	Dining, poseur
Size	Large, medium
Stocked or made to order	Stocked product



MEDIUM DINING

Max top size: ● 900mm ■ 700x700mm
Base dims: W430mm x D430mm
Base height: 720mm | Weight: 18kg

Product code: MANMD001

Manor medium dining height base with a 600mm round Black Tuff Top® MFC top (page 29)
Product code: MANMD001-600MBLA



MEDIUM POSEUR

Max top size: ● 900mm ■ 700x700mm
Base dims: W430mm x D430mm
Base height: 1100mm | Weight: 21.2kg

Product code: MANMP001



LARGE DINING

Max top size: ● 1100mm ■ 800x800mm
Base dims: W550mm x D550mm
Base height: 720mm | Weight: 24kg

Product code: MANLD001



LARGE POSEUR

Max top size: ● 1100mm ■ 800x800mm
Base dims: W550mm x D550mm
Base height: 1100mm | Weight: 26.2kg

Product code: MANLP001

THE ANCHOR BASE



The perfect base to ensure your tables stay exactly where you require them to stay. With its 5-bolt ground plate, the Anchor base remains undeterred and resolute, even in the harshest contract setting.

Two Anchor black dining height bases with a 1200 x 700mm rectangle bespoke stained Tuff Top® Solid Wood top (page 44)



Strong, sturdy and heavy single columned base, provides more leg room around table



Powder coated finish means knock and scratch resistant



5 fixing points for ultimate stability - bolts included



Adjustable feet



5 year structural warranty



Metal insert service



Powder coating service available



IN STOCK

Available in dining and poseur heights, the Anchor floor fixed table base is perfect for booth or wall attached tables as well as floor attached.

Colour	Black
Finish	Dimpled / Glossy
Shape	Round
Base group height	Dining, poseur
Size	N/A
Stocked or made to order	Stocked product



Fixing plate



DINING

Max top size: ● 800mm ■ 700x700mm
Base dims: W246mm x D246mm
Base height: 730mm | Weight: 6.5kg

Product code: ANCBD001



POSEUR

Max top size: ● 800mm ■ 700x700mm
Base dims: W246mm x D246mm
Base height: 1050mm | Weight: 7kg

Product code: ANCBP001



Anchor black dining height base with a 700mm round Tuff Top® Solid Marble White Carrara top (page 33).
Product Code: ANCBD001-700DMARBLECAR

THE VALENCIA BASE



The Valencia table base truly is the leviathan of our round base collection. This stylish, tri-columned design can easily handle table tops up to 1600mm in diameter or 1400mm square, making it perfect base for conference tables or large dining tables.

Valencia dining height base with a 1200mm round Tuff Top® MFC White top (page 29)



Stylish tri-column design is incredibly sturdy



Powder coated finish means knock and scratch resistant



Takes up to 1600mm round or 1400mm Square table tops



Adjustable feet



5 year structural warranty



Metal insert service



Powder coating service available

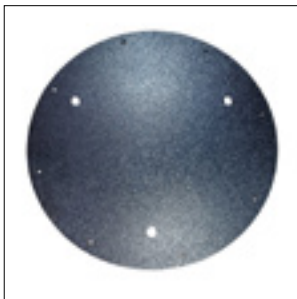


With it's triple columned design and large footprint, the Valencia base offers you the ultimate in stability. Our go to base for extra large round or square table tops.

Colour	Black
Finish	Dimpled / Glossy
Shape	Round column
Base group height	Dining
Size	Extra large
Stocked or made to order	Stocked product



Valencia base with an 1200mm round Tuff Top® Solid Wood top in Wenge (page 45). Product Code:: BLKXLRG-1200DSAWEN



Fixing plate



DINING

Max top size: ● 1600mm ■ 1400x1400mm
Base dims: W800mm x D800mm
Base height: 730mm | Weight: 47kg

Product code: BLKXLRG



Valencia base with a bespoke 1000mm round Tuff Top® Solid Marble top (page 33). Product Code:: BLKXLRG-1000DMARBLECAR

THE MADRID BASE



The Madrid flip top table base uses a zinc rich primer underneath the durable powder coated finish, creating an incredibly durable base for the harshest of environments. This cruciform style base with round column is the ultimate stackable, outdoor dining area table base.

Madrid flip top dining height base with a 690mm round Terrazzo Tuff Top® Compact Laminate top (page 39) and Pearl Grey and Yellow Zest chair (page 149)



Zinc rich primer under the powder coated finish - our most durable base for harsh outdoor environments



Adjustable feet



Scratch resistant and easy to clean



5 year structural warranty



Stackable for space saving



Metal insert service



Powder coating service available



The Madrid is a flip top base, meaning you get the added bonus of your tables being stackable for when saving space is an absolute requirement, perfect for the busiest of cafes, restaurants, pubs and outdoor commercial hospitality venues, as well as canteens and breakout areas where space may be a commodity. Available in both dining and poseur heights. Incredibly durable, highly stylish, the ultimate outdoor table base.

Colour	Black
Finish	Smooth / Satin
Shape	Cruciform
Base group height	Dining, poseur
Size	Single column cruciform
Stocked or made to order	Stocked product



FLIP TOP DINING

Max top size: ● 800mm ■ 800x800mm
 Base dims: A-B 465mm A-C 680mm
 Base height: 720mm | Weight: 8kg

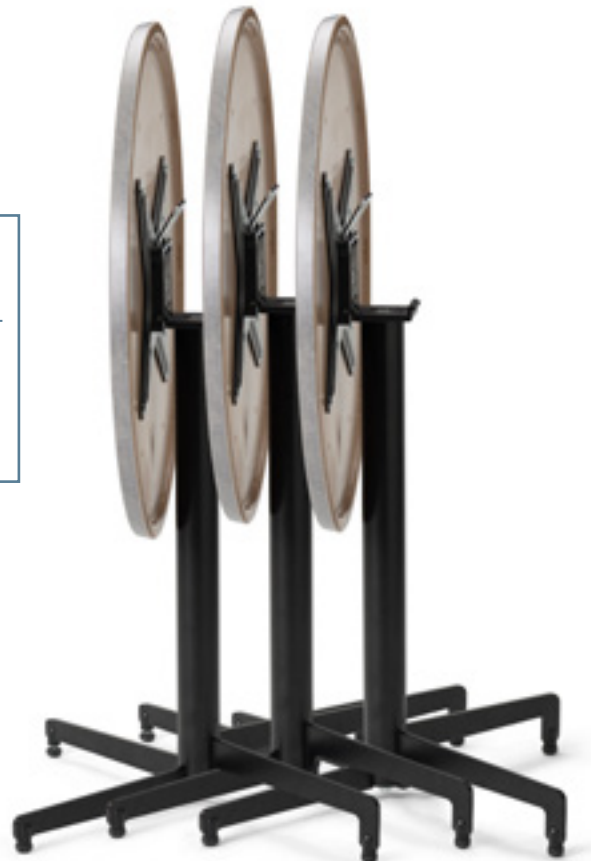
Product code: MADFTD001



FLIP TOP POSEUR

Max top size: ● 800mm ■ 800x800mm
 Base dims: A-B 465mm A-C 680mm
 Base height: 1010mm | Weight: 10kg

Product code: MADFTP001



THE MALAGA BASE



The Malaga table base uses a zinc rich primer underneath the durable powder coated finish, creating an incredibly durable base for the harshest of environments. This cruciform shaped base with round column is the wise choice for outdoor dining and social areas.

Malaga dining height base with a Tuff Top® Compact Laminate top and two Strata Jute chairs (page 153)



Zinc rich primer under the powder coated finish - our most durable base for harsh outdoor environments



5 year structural warranty



Scratch resistant and easy to clean



Metal insert service



Adjustable feet



Powder coating service available



At home even in the harshest of environments, the Malaga is perfect for your beer gardens, in front of your coffee shops, or at that restaurant on the end of the pier. Available as a dining height or poseur height, the Malaga range also comprises a twin dining height base perfect for our rectangle table tops.

Colour	Black
Finish	Smooth / Satin
Shape	Cruciform, twin column cruciform base
Base group height	Dining, poseur
Size	Single column cruciform, twin
Stocked or made to order	Stocked product



Malaga poseur height base with stocked Werzalit 700mm round Arizona top (page 57) and two Rio bar chairs Product code: MALP001-700DWZ119



DINING

Max top size: ● 800mm ■ 800x800mm
Base dims: A-B 480mm A-C 660mm
Base height: 715mm | Weight: 7kg

Product code: MALD001



POSEUR

Max top size: ● 800mm ■ 800x800mm
Base dims: A-B 480mm A-C 660mm
Base height: 1010mm | Weight: 9kg

Product code: MALP001



TWIN

Max top size: ■ 1400x800mm
Base dims: A-B 660mm A-C 840mm
Base height: 715mm | Weight: 11.1kg

Product code: MALTD001

THE CONTINENTAL BASE



The Continental is a robust and sturdy black base that will suit dining, restaurant and commercial environments, whether they have a traditional or contemporary style.

Continental 4 leg base with a 700 x 600mm Tuff Top® Solid Marble top (page 33) and two Paris Armchairs (page 158). Product Code: CON4-700600MARBLECAR-PARISARM2



Powder coated black finish, means scratch resistant and easy to clean



Adjustable feet



Stylish cast aluminium gives a lightweight, highly durable and easy to move base



5 year structural warranty



Stylish design brings a contemporary touch to both classic and modern dining environments



Powder coating service available



IN STOCK

With it's weather resistant cast aluminium construction, the Continental will look just as good in your outdoor bistro café area as it will in your fine cuisine eatery.

Colour	Black
Finish	Black powder coated
Shape	Cruciform
Base group height	Dining
Size	4 leg, grande, twin
Stocked or made to order	Stocked product



Continental twin dining height base with a 1100 x 700mm Ponderosa Grey Stocked Werzalit top (page 46) and four Strata Anthracite chairs (page 97)
Product code: CONT-1100700WZ179-STRANT4

SUITABLE FOR
BOTH INDOOR AND
OUTDOOR USE



4 LEG

Max top size: ● 800mm ■ 800x800mm
Base dims: A-B 405mm A-C 590mm
Base height: 690mm | Weight: 4.9kg

Product code: CON4



GRANDE

Max top size: ● 1000mm ■ 900x900mm
Base dims: A-B 625mm A-C 860mm
Base height: 690mm | Weight: 7.8kg

Product code: CONG



TWIN

Max top size: ■ 1200x800mm
Base dims: A-B 645mm A-C 850mm
Base height: 690mm | Weight: 8.6kg

Product code: CONT

THE PHOENIX BASE



The Phoenix table base is our most budget friendly base. But don't let the word budget fool you, this base is built to last. With a black cast iron cruciform base and a black powder coated cut steel column, the Phoenix provides a stylish yet inexpensive option for venues where style is needed but budget is a large consideration.

Phoenix small dining height bases with 600mm round White Tuff Top® MFC tops (page 29) and Yellow and Grey Strata chairs (page 153)



This great value entry level base has a strong and sturdy construction, perfect for any environment



Powder coated finish means knock and scratch resistant in busy environments



Easy to assemble - 3 bolts both ends of column to attach to spider / base



Adjustable feet



5 year structural warranty



Powder coating service available

IN STOCK

THE PHOENIX

Available stocked for same day despatch in three different sizes and three different heights, the Phoenix is a great value entry level option that will suit any Pub, Bar, Restaurant, Café, Canteen or Breakout dining area or venue.

Colour	Black
Finish	Black powder coated
Shape	Cruciform
Base group height	Coffee, dining, poseur
Size	Large, small, twin
Stocked or made to order	Stocked product



Phoenix small dining height base with 600mm round Grey Nebraska Oak Tuff Top® MFC top (page 29)
Product code: PHOSD001-600DMNEB



SMALL COFFEE

Max top size: ● 800mm ■ 700x700mm
Base dims: A-B 425mm A-C 560mm
Base height: 480mm | Weight: 6.05kg

Product code: PHOSC001



SMALL DINING

Max top size: ● 800mm ■ 700x700mm
Base dims: A-B 425mm A-C 560mm
Base height: 720mm | Weight: 6.6kg

Product code: PHOSD001



SMALL POSEUR

Max top size: ● 800mm ■ 700x700mm
Base dims: A-B 425mm A-C 560mm
Base height: 1050mm | Weight: 7.1kg

Product code: PHOSP001



Phoenix large dining height base with a 700mm square White Formica Fundamentals Tuff Top® Laminate top (page 20) with contrasting Yellow edging (page 22) and two Strata Yellow chairs (page 153)



LARGE COFFEE

Max top size: ● 1000mm ■ 900x900mm
Base dims: A-B 570mm A-C 806mm
Base height: 480mm | Weight: 9.25kg

Product code: PHOLC001



LARGE DINING

Max top size: ● 1000mm ■ 900x900mm
Base dims: A-B 570mm A-C 806mm
Base height: 720mm | Weight: 9.8kg

Product code: PHOLD001



LARGE POSEUR

Max top size: ● 1000mm ■ 900x900mm
Base dims: A-B 570mm A-C 806mm
Base height: 1050mm | Weight: 10.3kg

Product code: PHOLP001



TWIN COFFEE

Max top size: ■ 1800x1000mm
Base dims: W548mm x D125mm
Base height: 480mm | Weight: 9kg

Product code: PHOTC001



TWIN DINING

Max top size: ■ 1800x1000mm
Base dims: W548mm x D124mm
Base height: 720mm | Weight: 10.1kg

Product code: PHOTD001



TWIN POSEUR

Max top size: ■ 1800x1000mm
Base dims: W548mm x D124mm
Base height: 1050mm | Weight: 11.1kg

Product code: PHOTP001

THE BISTRO BASE



Introducing the Bistro black cast iron table base. These beautiful sturdy table bases are inspired by a classic French bistro style incorporating an ornate decorative styling that is also incredibly budget friendly.

Bistro 4 leg dining height base with a Tuff Top® Laminate 25mm MTO top in Light Grey Chicago Concrete (page 18) with a Champagne metallic edging (page 23)



Strong, sturdy, durable and heavy single columned base



Powder coated finish means knock and scratch resistant



Easy to assemble - 2 bolts both ends of column to attach to spider / base



Adjustable feet



5 year structural warranty



Metal insert service



Powder coating service available



Dimension key



In stock for same day despatch, the Bistro base is at home anywhere from a high-end café, tapas or wine bar to a classic pub or restaurant front of house. Available as both Dining and Poseur heights, the Bistro black cast iron table base will bring a touch of class to any hospitality drinking or dining area.

Colour	Black
Finish	Black powder coated
Shape	Bistro, cruciform
Base group height	Dining, poseur
Stocked or made to order	Stocked Product



Bistro 4 leg dining height base with a 700mm round Grey Nebraska Oak Tuff Top® MFC top (page 29)
Product code: BIS4D001-700DMNEB

**DINING**

Max top size: ● 800mm ■ 800x800mm
Base dims: A-B 390mm A-C 520mm
Base height: 720mm | Weight: 13.05kg

Product code: BIS4D001

**POSEUR**

Max top size: ● 800mm ■ 800x800mm
Base dims: A-B 390mm A-C 520mm
Base height: 1090mm | Weight: 16.2kg

Product code: BIS4P001



Bistro dining height table base with a 700mm square Black Tuff Top® MFC top (page 26)
Product code:
BIS4D001-700700MBLA

THE BISTRO GOLD BASE



Introducing the Bistro Gold Cast Iron Table Base. We've taken our popular French bistro style base and taken it up a level with a luxurious yet durable gold powder coated finish.

Bistro Gold dining height base with a 700mm Round Tuff Top® Solid Marble top (page 33)
Product Code: GOLDBIS4D001-700DMARBLECAR



Strong, sturdy, durable and heavy single columned base



Powder coated finish means knock and scratch resistant



Easy to assemble - 2 bolts both ends of column to attach to spider / base



Adjustable feet



5 year structural warranty



Metal insert service



Powder coating service available



IN STOCK

Dimension key

SUITABLE FOR
BOTH INDOOR AND
OUTDOOR USE



DINING

Max top size: ● 800mm ■ 800x800mm
Base dims: A-B 390mm A-C 520mm
Base height: 720mm | Weight: 13.05kg

Product code: BIS4D001

With it's opulent gold finish, the Gold Bistro will add a touch of decadence, charisma and class to any venue. Budget friendly beauty.

Colour	Gold
Finish	Gold powder coated
Shape	Bistro, cruciform
Base group height	Dining
Stocked or made to order	Stocked Product



Bistro Gold dining height table base with a Tuff Top® Laminate 25mm MTO top in Black Pietra (page 18) with a Gold metallic edging (page 23)



Bistro Gold dining height table base with a Tuff Top® Laminate 25mm MTO top in Flamingo Pink (page 14) with a Gold metallic edging (page 23)

THE BOOM TABLE



Offering a minimal yet elegant design, our Boom table is bound to attract attention. The Boom Flip Top table features an incredibly sturdy, reinforced fibreglass table top which comes in three sizes. The tops have a porous design that acts as both an attractive feature as well as a functional one, allowing spillages or rainwater to seep through.

Boom 600mm dining height table with two Boom armchairs (page 140)



Carry handle for ease of movement



Easy to use flip top mechanism



Easy to clean



5 year structural warranty



Stackable interlocking base



Will not rust, even in harsh coastal environments



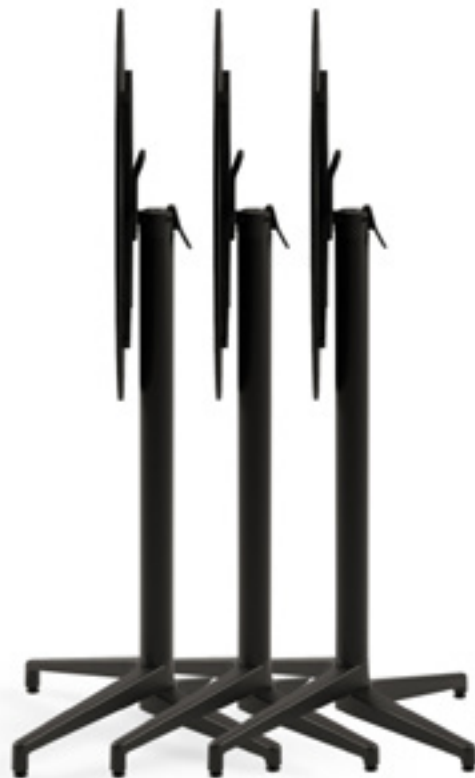
On top of the aluminium column you have both the flip mechanism as well as a carrying handle, making the Boom incredibly easy to move and stack.

Colour	Black
Finish	Smooth/Matt
Shape	Cruciform
Base group height	Dining
Size	Single column cruciform
Stocked or made to order	Stocked product

Carry handle



SUITABLE FOR
BOTH INDOOR AND
OUTDOOR USE



FLIP TOP ROUND DINING

Top size: ● 600mm
Base dims: W470mm x D500mm
Base height: 780mm | Weight: 9.6kg

Product code: BOOMTAB600D



FLIP TOP SQUARE DINING

Top size: ■ 700x700mm
Base dims: W470mm x D500mm
Base height: 780mm | Weight: 11.1kg

Product code: BOOMTAB70070



FLIP TOP SQUARE DINING

Top size: ■ 800x800mm
Base dims: W470mm x D500mm
Base height: 780mm | Weight: 13.3kg

Product code: BOOMTAB800800

THE MANHATTAN FRAME



The Manhattan black powder coated aluminium table frame. Lightweight yet durable, the minimalistic design of the Manhattan table frame means it perfectly compliments our square 12mm thick Tuff Top® Compact laminate range, but will also pair well with any square and rectangle table top that you decide to adorn your Manhattan with.

Manhattan 675mm dining and poseur height frames with a 690mm square Marquina Marble Tuff Top® Compact Laminate top (page 39)



Easy to Assemble - 2 bolts fix each leg to the frame



Powder Coated aluminium - can be used both outdoors and indoors



Lightweight and durable aluminium frame for ease of movement



Adjustable feet



5 year structural warranty



Powder coating service available



The Manhattan is made with lightweight aluminium which is powder coated black which means that the Manhattan is extremely durable and suitable for both outdoor and indoor use. Easy to assemble, the sleek, modern, lightweight design of the Manhattan make it the perfect table frame for any hospitality or office dining environment.

Colour	Black
Finish	Black powder coated
Shape	Square, Rectangle
Base group height	Dining, poseur
Size	Medium, twin
Stocked or made to order	Stocked product



SQUARE DINING

Max top size: ■ 700x700mm
Base dims: W675mm x D675mm
Base height: 720mm | Weight: 5.3kg

Product code: MANHAT675D

SUITABLE FOR
BOTH INDOOR AND
OUTDOOR USE



Manhattan 675mm dining height frame with a 690mm square Marquina Marble Tuff Top® Compact Laminate top (page 39)
Product code: MANHAT675D-690690CLMARMAR



SQUARE POSEUR

Max top size: ■ 700x700mm
Base dims: W675mm x D675mm
Base height: 1070mm | Weight: 7.8kg

Product code: MANHAT675P



RECTANGLE DINING

Max top size: ■ 1200x800mm
Base dims: W1175mm x D675mm
Base height: 720mm | Weight: 6.2kg

Product code: MANHAT1175D



RECTANGLE POSEUR

Max top size: ■ 1200x800mm
Base dims: W1175mm x D675mm
Base height: 1070mm | Weight: 9.3kg

Product code: MANHAT1175P



600mm square Tuff Top® Solid Wood Walnut top (page 42)
with Hairpin legs (page 108) and Bourbon Side Chairs (page 128)

LEGS

THE HAIRPIN LEGS



Staying true to the original hairpin legs designed by Henry Glass in the 1940s, our stylish designer classic Hairpin style leg in a black powder coat finish are perfect for any industrial style setting.

Hairpin legs (Qty 4 per box) with a 700mm square 34mm thick Rainbow Pine Tuff Top® Rustic Wood top (page 53)



One size fits all, have as many hairpins on a top as you require



Removable feet



Separate floor protector plastic glides included for use on surfaces susceptible to scratching



5 year structural warranty



Minimal surface area makes them easier to clean



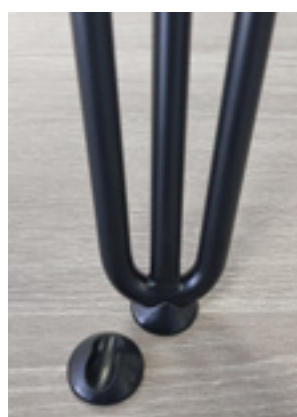
Powder coating service available



IN STOCK

These hairpin legs with their heavy duty, 12mm thick metal rods, will add both stability and mid-century modern style to your dining or coffee height tables.

Colour	Black
Finish	Black powder coated
Shape	Hairpin legs
Base group height	Coffee, dining
Stocked or made to order	Stocked product



Removable feet

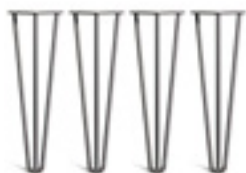


TABLE LEG COFFEE

Max top size: ■ 1500x900mm
Base dims: W110mm x D110mm
Base height: 400mm | Weight: 2.8kg

Product code: HAIRC4

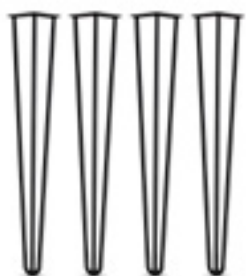


TABLE LEG DINING

Max top size: ■ 1500x900mm
Base dims: W110mm x D110mm
Base height: 710mm | Weight: 4.4kg

Product code: HAIRD4



Hairpin legs (Qty 4 per box) with a 700mm square 34mm thick Stripped Pine Tuff Top® Rustic Wood top (page 53)
Product code: HAIRD4-600600RSTRPIN

THE NAPA LEGS



The Napa leg is a simple yet incredibly effective support leg that can be used to support tables in a multitude of sizes and shapes. Available in four modern colours – Chrome, Grey, Black and White – The Napa legs will provide a sturdy, attractive support to any table top you decide to add them to.

Napa black legs with a Light Grey Chicago Concrete Tuff Top® Laminate top (page 18).



Metal insert service



Can be cutdown



Adjustable feet



5 year structural warranty



Powder coating service available



IN STOCK

The Napa Legs each have adjustable feet so that they can adapt to uneven floors, meaning they are suitable for a variety of venues.

Colour	Black, Chrome, Grey, White
Finish	Smooth / various
Shape	Hairpin legs
Base group height	Dining
Stocked or made to order	Stocked product



Napa black legs with a 1200 x 700mm Tuff Top® MFC Light Grey Chicago Concrete top (page 29).
Product Code: NAPA4BLA-1200700MCON



Napa chrome legs with a 700mm Round Tuff Top® MFC Walnut top (page 29).
Product Code: NAPA4CHR-700DMWAL



BLACK TABLE LEG DINING

Max top size: ■ 1600x800mm
Leg dims: W60mm x D60mm
Leg height: 710mm | Weight: 4.4kg

Product code: NAPA4BLA



CHROME TABLE LEG DINING

Max top size: ■ 1600x800mm
Base dims: W60mm x D60mm
Base height: 710mm | Weight: 4.4kg

Product code: NAPA4CHR



GREY TABLE LEG DINING

Max top size: ■ 1600x800mm
Base dims: W60mm x D60mm
Base height: 710mm | Weight: 4.4kg

Product code: NAPA4GGRY



WHITE TABLE LEG DINING

Max top size: ■ 1600x800mm
Base dims: W60mm x D60mm
Base height: 710mm | Weight: 4.4kg

Product code: NAPA4WHI



Adjustable feet

THE SCANDI LEGS



Offering a timeless look, our Scandi European oak legs will add a touch of Scandinavian style to your table. These angled table legs, with a tapered profile are made from high quality European oak and provide a natural look for any project. Designed to handle large tops for up to eight people, these legs will provide a solid, stable footing for your table.

Scandi Oak legs with an 800mm Square White Tuff Top® MFC top (page 26) and Vivo side chairs in Terracotta Red (page 138)



5 year structural warranty



High quality European Oak



Natural look hard wax oil finish



MADE TO
ORDER

Made from carefully selected single stave oak boards, with a beautiful, characteristic grain, the Scandi legs have been treated with a high-quality hard wax oil finish which is designed to protect the wood while leaving a natural look and feel. For indoor use only.

Colour	Oak
Finish	Natural look hard wax oil
Shape	Scandi legs
Base group height	Dining
Stocked or made to order	Made to order product



TABLE LEG DINING

Max top size: ■ 1600x800mm
Base dims: W60mm x D60mm
Base height: 710mm | Weight: 6.4kg

Product code: SCANDI4



Scandi oak legs with a 1200 x 700mm Tuff Top® MFC Light Grey Chicago Concrete top (page 29).
Product Code: SCANDI4-1200700MCON



Scandi oak legs with a 700mm round Tuff Top® MFC White top (page 29).
Product Code: SCANDI4-700DMWHI



Scandi oak legs with a 700 x 700mm Square Tuff Top® MFC Black top (page 29).
Product Code: SCANDI4-700700MBLA

THE INDUSTRIAL LEGS



Our Industrial legs will add an edgy, durable, industrial style finish to your table. Manufactured using a combination of modern CNC techniques and traditional handmade craftsmanship, these table legs will add both stability and industrial style to any project or theme. Able to support even the heaviest of projects, the Industrial legs are constructed from laser-cut 75mm x 25mm box section, an extra thick base plate and full TIG welding meaning they are extremely sturdy and solid. Available in three stunning shapes – X Frame, A frame and Square Frame.



5 year structural warranty



2 legs, screws, feet & build guide



Strong furniture grade steel, TIG welded



Pads included for bottom of leg to prevent scratching floors



Powder coating service available

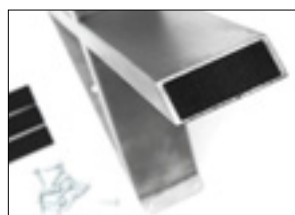
A Frame industrial legs with a 1200 x 700mm stocked Tuff Top® Solid Wood Walnut top (page 42) and Bourbon Armchairs in Tabasco (page 130)



MADE TO ORDER

Designed to work with tables from 600mm to 1500mm wide, the Industrial legs are a perfect match for any of our tabletop ranges.

Colour	Black, Clear, Steel, White
Finish	Smooth / Semi Gloss
Shape	A-frame, X-frame, Square
Base group height	Dining
Stocked or made to order	Made to order product



Felt feet pads

COLOUR OPTIONS

PRODUCT	COLOUR
A-FRAME DINING	Raw Steel, Clear Lacquer, White, Black
X-FRAME DINING	
SQUARE FRAME DINING	



Tuff Top® MFC Wenge top (page 29) on X frame industrial legs in black



Tuff Top® MFC Light Grey Chicago Concrete top (page 29) on Square frame Industrial legs in black



A-FRAME DINING

Max top size: ■ 1500 x 900mm
Base dims: W580mm x D75mm
Base height: 710mm | Weight: 9.9kg

Product code: AFRAMELEGS



X-FRAME DINING

Max top size: ■ 1500 x 900mm
Base dims: W580mm x D75mm
Base height: 710mm | Weight: 9.9kg

Product code: XFRAMELEGS



SQUARE FRAME DINING

Max top size: ■ 1500 x 900mm
Base dims: W580mm x D75mm
Base height: 710mm | Weight: 11.6kg

Product code: SQUAREFRAMELEGS



Unite poseur height table with Tuff Top® MFC
Grey Nebraska Oak top (page 29)

UNITE

THE BREAK OUT RANGE



The Unite - Break Out range provides you with the ultimate modern, customisable, table and frame system. Available fully welded or knockdown, with an array of table top decors and frame colours achievable through our bespoke made to order service.



Powder coated finish means this is knock and scratch resistant



Easy to clean



5 year structural warranty



Powder coating service available

TABLE/BENCH TOP COLOUR OPTIONS

EGGER DECORATIVE COLLECTION 24+



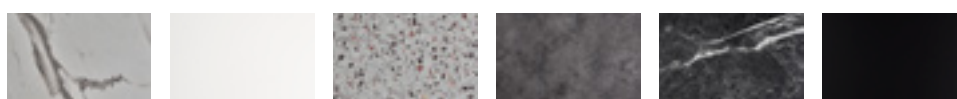
MFC COLLECTION



MARBLE AND STONE LAMINATE



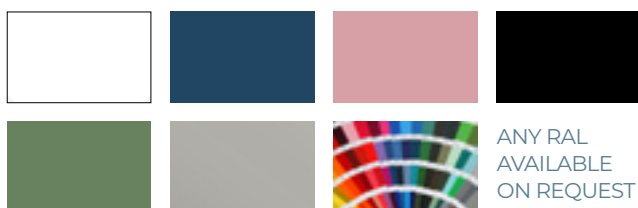
COMPACT LAMINATE



ANY LAMINATE OR
MFC DECOR AVAILABLE
UPON REQUEST



FRAME COLOUR OPTIONS



ANY RAL
AVAILABLE
ON REQUEST



AVAILABLE FRAME SIZES

PRODUCT	HEIGHT (mm)	WIDTH (mm)			DEPTH (mm)						
		700	750	800	1200	1400	1600	1800	2000	2200	2400
DINING	700										
POSEUR	1050										
BENCH	400	350			1100	1300	1500	1700	1900	2100	2300

AVAILABLE BREAKOUT TABLE / BENCH TOP THICKNESS

PRODUCT	THICKNESS (mm)	
MFC	25	40
LAMINATE	25	40
COMPACT	12	



POSEUR TABLE



CANTEEN TABLE



BENCH

THE SYNERGY RANGE



The Synergy range features a single columned base made from durable cast iron. Anti-spin. Powder coat to a colour of your choosing. Style and functionality in abundance.



Powder coated finish means this is knock and scratch resistant



Easy to clean



5 year structural warranty



Powder coating service available

TABLE/BENCH TOP COLOUR OPTIONS

EGGER DECORATIVE COLLECTION 24+



MFC COLLECTION



MARBLE AND STONE LAMINATE



COMPACT LAMINATE



ANY LAMINATE OR
MFC DECOR AVAILABLE
UPON REQUEST



FRAME COLOUR OPTIONS



ANY RAL
AVAILABLE
ON REQUEST



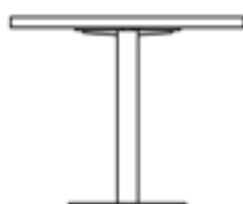
AVAILABLE TOP DIMENSIONS (SQUARE OR ROUND)

PRODUCT	THICKNESS (mm)		■ WIDTH / DEPTH (mm)						● DIAMETER (mm)					
MFC	25		600	700	800	900	1000	1200	600	700	800	900	1000	1200
LAMINATE	25	40	600	700	800	900	1000	1200	600	700	800	900	1000	1200
COMPACT	12		600	700	800	900	1000	1200	600	700	800	900	1000	1200



COFFEE HEIGHT

Frame height: 480mm



DINING HEIGHT

Frame height: 480mm



POSEUR HEIGHT

Frame height: 1050mm

THE SYNERGY TWIN RANGE



The Synergy Twin range features two single columned bases made from durable cast iron. In a choice of square or round. Powder coat to a colour of your choosing. Stylish profile will turn heads.

Twin Dining or Poseur Height with Square or Round Base plates and columns.



Powder coated finish means this is knock and scratch resistant



Easy to clean



5 year structural warranty



Powder coating service available

TABLE/BENCH TOP COLOUR OPTIONS

EGGER DECORATIVE COLLECTION 24+



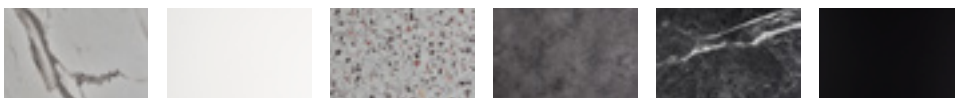
MFC COLLECTION



MARBLE AND STONE LAMINATE



COMPACT LAMINATE



ANY LAMINATE OR
MFC DECOR AVAILABLE
UPON REQUEST



FRAME COLOUR OPTIONS



ANY RAL
AVAILABLE
ON REQUEST

AVAILABLE TOP DIMENSIONS

WIDTH (mm)						
1200	1300	1400	1500	1600	1700	1800
1900	2000	2100	2200	2300	2400	
DEPTH (mm)						
600	700	800	900	1000	1100	1200
PRODUCT		THICKNESS (mm)				
MFC		25				
LAMINATE		25	40			
COMPACT		12				



DINING HEIGHT

Frame height: 730mm



POSEUR HEIGHT

Frame height: 1050mm

THE QUAD RANGE



The Quad range will breathe fresh air into the classroom or social space. Featuring either 25mm square or 40mm round legs. Choose the top and frame colour that suits your project. You're no longer restricted by the generic.



Powder coated finish means this is knock and scratch resistant



Easy to clean



5 year structural warranty



Powder coating service available

TABLE/BENCH TOP COLOUR OPTIONS

EGGER DECORATIVE COLLECTION 24+



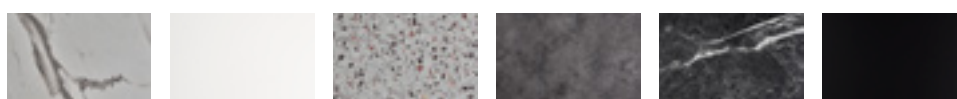
MFC COLLECTION



MARBLE AND STONE LAMINATE



COMPACT LAMINATE



ANY LAMINATE OR
MFC DECOR AVAILABLE
UPON REQUEST



FRAME COLOUR OPTIONS



ANY RAL
AVAILABLE
ON REQUEST



TOP THICKNESS OPTIONS

PRODUCT	THICKNESS (mm)	
MFC	25	
LAMINATE	25	40
COMPACT	12	

AVAILABLE TABLE DIMENSIONS

HEIGHT (mm)						
460	530	590	640	710	760	
WIDTH (mm)						
550	600	750	800	1100	1200	1500 1800
DEPTH (mm)						
550	600	750	800			



TABLE WITH ROUND LEGS

Legs: 40mm diameter



TABLE WITH SQUARE LEGS

Legs: 25mm x 25mm



CHAIRS

THE BOURBON CHAIR



The Bourbon range, with its industrial vibes, offers the user a modern take on a vintage classic. The Bourbon is upholstered using Sunbury vintage faux suede that is treated with EVERCLEAN + fabric protection which protects the fabric against the majority of spills and stains and even includes an antibacterial finish. This provides a highly durable yet incredibly comfortable finish that is available in six stunning colours.

SWATCH SAMPLES
ARE AVAILABLE FOR
EVERY BOURBON
COLOURWAY
THAT WE
OFFER





Contract grade fabric



Stackable for space saving -
up to 6 high



Everclean + advanced fabric
protection means the fabric is
easy to clean and antibacterial



5 year structural warranty



Adjustable feet

IN STOCK

Bourbon Tabasco bar chairs with a 600mm round Tuff Top®
Solid Wood Walnut top (page 45) on a Bistro poseur
height base (page 99)

BOURBON CHAIR

Available in six different colours and as either an Armchair, Side Chair, or a Bar Chair, and stackable six high, the Bourbon is an incredibly stylish, modern chair that will raise the bar in any venue or location.

Weight	Armchair: 3.8kg Bar chair: 5.6kg Side chair: 5.6kg
Height	Armchair: 795mm Bar chair: 1090mm Side chair: 795mm
Depth	510mm
Width	Armchair: 510mm Bar chair: 430mm Side chair: 430mm
Seat height	Armchair: 460mm Bar chair: 770mm Side chair: 460mm
Arm height	650mm
Colour	6 colour options
Materials	Faux Suede / Steel frame
Stack quantity	6
Stocked or made to order	In stock



Bourbon Tabasco side chairs with a 600mm square Oak Tuff Top® Solid Wood top (page 45) on a Forza Square dining height base (page 66)
Product code: BRSD001-600DMWHI-VIB CER2





SIDE CHAIR ABERDEEN

Product code: BOUSIDABE



SIDE CHAIR ALLSPICE

Product code: BOUSIDALL



SIDE CHAIR FERN

Product code: BOUSIDFER



SIDE CHAIR GOLDMINE

Product code: BOUSIDGOL



SIDE CHAIR GRAPHITE

Product code: BOUSIDGRA



SIDE CHAIR TABASCO

Product code: BOUSIDTAB



Bourbon Allspice side chairs with a 700mm round Tuff Top® Solid Wood Walnut top (page 45) on a Forza dining height base (page 68)
Product Code: BSSD001-700700SWOAK-BOUSIDTAB2

CHAIRS



ARMCHAIR ABERDEEN

Product code: BOUARMABE



ARMCHAIR ALLSPICE

Product code: BOUARMALL



ARMCHAIR FERN

Product code: BOUARMFER



ARMCHAIR GOLDMINE

Product code: BOUARMGOL



ARMCHAIR GRAPHITE

Product code: BOUARMGRA



ARMCHAIR TABASCO

Product code: BOUARMTAB



Bourbon Aberdeen armchairs with a 700mm square Walnut Tuff Top® Solid Wood top (page 45) on a Forza dining height base (page 67)
Product Code: BSSD001-700700SWWAL-BOUARMABE2



Bourbon Graphite bar chairs with a 690mm square Tuff Top® Compact Laminate White Marble top (page 39) on a Manhattan poseur height base (page 104). Product Code: MANHAT675P-690690CLWHIMAR-BOUBARGRA



BAR CHAIR ABERDEEN

Product code: BOUBARABE



BAR CHAIR ALLSPICE

Product code: BOUBARALL



BAR CHAIR FERN

Product code: BOUBARFER



BAR CHAIR GOLDMINE

Product code: BOUBARGOL



BAR CHAIR GRAPHITE

Product code: BOUBARGRA



BAR CHAIR TABASCO

Product code: BOUBARTAB

THE BOURBON MADE TO ORDER CHAIR



Create the perfect Bourbon for you using our Bespoke Made To Order service. Using our bespoke service you now have the choice of customising the upholstery fabric, the stitching pattern on your fabric, and even the frame colour, providing you with 280 design combinations to choose from.



Strong, sturdy, tubular frame



Customise the upholstery fabric, stitching pattern and frame colour



Adjustable feet



Stackable for space saving - up to 6 high



5 year structural warranty



Powder coating service available

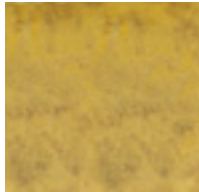
BESPOKE OPTIONS

MADE TO
ORDER

STITCHING DETAILS

Plain

No stitching pattern on the back rest or the seat pad.



Ribbed

Vertical ribbed stitching pattern on back rest and seat pad.



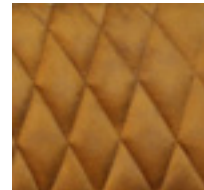
Buttoned

Buttons will be on backrest only. Seat pad will be plain.



Diamond

Vertical diamond stitching pattern on back rest and seat pad.



LEG COLOUR OPTIONS

Black
(default)



Gun
Metal



Copper



Gold



White



Beige
Taupe



Nautical
Blue



Aqua
Blue



Red



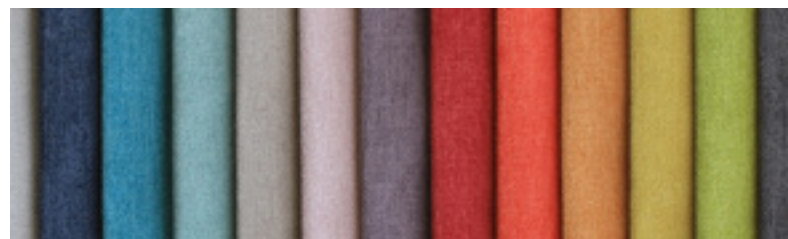
Light
Grey



COM



With our COM (Customers Own Material) service, we can upholster your Bourbon chair to tie into any brand theme or existing colour scheme at no extra cost.



THE VIVO CHAIR



The Vivo polypropylene chair. Available as both an armchair and a side chair, the Vivo certainly lives up to its name and will help bring any room or social space to life. With its sleek curves and smooth, matt finish, the Vivo is suitable for both indoor and outdoor use, and provides a modern, highly attractive seating option that will look equally at home in hospitality venues as well as office or educational environments

SUITABLE FOR
BOTH INDOOR AND
OUTDOOR USE



SWATCH SAMPLES
ARE AVAILABLE
FOR EVERY VIVO
COLOURWAY
THAT WE
OFFER





Incredibly light for ease of movement and storage



Easy clean, wipeable surface with a matt finish



Lasting strength combined with high cleaning practicality



Stackable for space saving - up to 8 high



5 year structural warranty

IN STOCK

VIVO

The Vivo range is available in a choice of seven stunning colours, from the bold and vibrant Mustard, Avocado and Terracotta Red, to the subtle yet attractive Black, White, Jute, or Dark Grey.

Weight	Armchair: 4kg Side chair: 3.6kg
Height	810mm
Depth	510mm
Width	Armchair: 530mm Side chair: 460mm
Seat height	460mm
Arm height	675mm
Colour	7 colour options
Materials	Polypropylene
Stack quantity	8
Stocked or made to order	Stocked product



Anti-scratch
stacking protection





SIDE CHAIR AVOCADO

Product code:
VIVSIDAVO



SIDE CHAIR BLACK

Product code:
VIVSIDBLA



SIDE CHAIR DARK GREY

Product code:
VIVSIDDARGRY



SIDE CHAIR JUTE

Product code:
VIVSIDJUT



SIDE CHAIR MUSTARD

Product code:
VIVSIDMUS



SIDE CHAIR TERRACOTTA RED

Product code:
VIVSIDTERRED



SIDE CHAIR WHITE

Product code:
VIVSIDWHI



ARMCHAIR AVOCADO

Product code:
VIVARMAVO



ARMCHAIR BLACK

Product code:
VIVARMBLA



ARMCHAIR DARK GREY

Product code:
VIVARMDARGRY



ARMCHAIR JUTE

Product code:
VIVARMJUT



ARMCHAIR MUSTARD

Product code:
VIVARMMUS



ARMCHAIR TERRACOTTA RED

Product code:
VIVARMTERRED



ARMCHAIR WHITE

Product code:
VIVARMWHI

THE BOOM CHAIR



Boom polypropylene armchair. Unique to the UK shores, the Boom, with its ultra modern styling, will bring an explosion of charisma and comfort into any social space. Suitable for indoors as well as out, this modern, alluring seating option will make a bold statement in any space it adorns. The Boom armchair is available in a choice of seven inviting colours.

SUITABLE FOR
BOTH INDOOR AND
OUTDOOR USE



SWATCH SAMPLES
ARE AVAILABLE
FOR EVERY BOOM
COLOURWAY
THAT WE
OFFER





Incredibly light for ease of movement and storage



Easy clean, wipeable surface with a matt finish



Stackable for space saving - up to 8 high



5 year structural warranty

IN STOCK

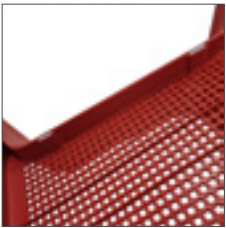
BOOM

Why not complete your Boom chair with one of our Boom cushions available in five cushion colour options? Add that extra layer of comfort as well as an extra dimension to the look of your Boom chair. The Boom cushions attach securely to the back of the chair to ensure no movement when in use and come in five bold contrasting colours – Beige, Blue, Green, Dark Grey and Orange.

Weight	3.8kg
Height	797mm
Depth	575mm
Width	585mm
Seat height	450mm
Arm height	660mm
Colour	7 colour options
Materials	Polypropylene
Stack quantity	8
Stocked or made to order	Stocked product



Anti-scratch
stacking protection



Two Boom armchairs in Avocado with a square Tuff Top® MFC top in White (page 29) on a Forza square dining height base (page 67)
Product Code: BSMD001-700700MWHI-BOOMAVO2



AVOCADO

Product code: BOOMAVO



BLACK

Product code: BOOMBLA



DARK GREY

Product code:
BOOMDARGRY

JUTE

Product code: BOOMJUT



MUSTARD

Product code: BOOMMUS



TERRACOTTA RED

Product code:
BOOMTERRED

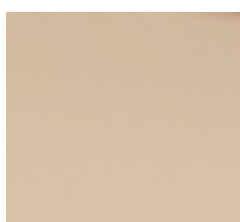
WHITE

Product code: BOOMWHI

CUSHION COLOURS



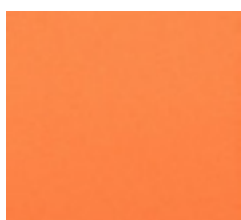
GREEN



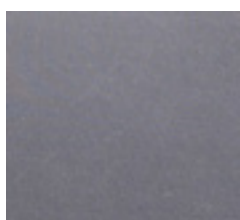
BEIGE



BLUE



ORANGE



GREY



THE LUXE ARMCHAIR



The Luxe Armchair provides the classic styling of French bistro style chairs. Stackable four high, the Luxe, with it's polypropylene wicker effect weave, and bamboo effect lightweight aluminium frame, the Luxe will bring a touch of continental style to any outdoor drinking and dining space.



Stackable for space saving - up to 6 high



5 year structural warranty



Lightweight and durable bamboo effect aluminium frame



Polypropylene wicker effect weave makes it easy to clean



IN STOCK

This classic Parisian style chair works brilliantly indoors and outdoors, and is incredibly easy to move and clean.

Weight	3.9kg
Height	820mm
Depth	560mm
Width	570mm
Seat height	560mm
Colour	Black and white weave with bamboo effect frame
Materials	Polypropylene / Aluminium
Stack quantity	6
Stocked or made to order	In stock

SUITABLE FOR
BOTH INDOOR AND
OUTDOOR USE



Two Luxe armchairs with a 700mm round Marble Sienna Werzalit top (page 59) on a Continental dining height base (page 92) with brass metal ring (page 61)
Product Code: CON4-700DWZI74BRASS-LUXEARM2



Two Luxe armchairs with a 690mm round Terrazzo Tuff Top® Compact Laminate top (page 39) on a Bistro dining height base (page 98)
Product Code: BIS4D001-690DCLTER-LUXEARM2

THE ZEST CHAIR



The Zest polypropylene outdoor side chair is an incredibly durable, modern and stylish side chair, suitable for outdoor and Indoor use. Available In an amazing choice of 16 stunning colours, there is a Zest chair to fit any colour, décor or brand requirements, making it perfect for any hospitality dining or office canteen and breakout area requirements.

SUITABLE FOR
BOTH INDOOR AND
OUTDOOR USE



SWATCH SAMPLES
ARE AVAILABLE
FOR EVERY ZEST
COLOURWAY
THAT WE
OFFER





Incredibly light for ease of movement and storage



Easy clean, wipeable surface. Glossy finish emphasises the brilliant colours



Available in 16 colours - our largest range of colours for a chair



Stackable for space saving - up to 8 high



5 year structural warranty

IN STOCK

ZEST

The Zest chair has a glossy finish which really emphasises the vibrant colours, and with it's unique cutaway pattern design the Zest chair is sure to turn heads. And if durability is key, we dropped a Zest chair off the highest point of a forklift onto a hard tarmac car park and it survived without any structural damage, just a few scratches.

Weight	3.2kg
Height	810mm
Depth	510mm
Width	520mm
Seat height	430mm
Colour	16 colour options
Materials	Polypropylene
Stack quantity	8
Stocked or made to order	In stock



Need further convincing on the strength and durability of the Zest chair? Watch our video here where we drop it from a forklift and throw it 20 feet in the air.



Anti-scratch
stacking protection



Zest Bright Green chairs with a 700mm square White Tuff Top® Laminate top (page 10) on a Malaga dining height base (page 91)
Product code: MALD001-700700LWHI-ZESBRIGRN2



WHITE

Product code: ZESWHI



IVORY

Product code: ZESIVO



JUTE

Product code: ZESJUT



PEARL GREY

Product code: ZESPEAGRY



MOKA

Product code: ZESMOK



ANTHRACITE

Product code: ZESANT



SKY BLUE

Product code: ZESSKYBLU



AVIO BLUE

Product code: ZESAVIBLU



STORM BLUE

Product code: ZESSTOBLU



PETROL BLUE

Product code: ZESPETBLUE



SAGE GREEN

Product code: ZESSAGGRN



ANISE GREEN

Product code: ZESANIGRN



BRIGHT GREEN

Product code: ZESBRIGRN



YELLOW

Product code: ZESYEL



ORANGE

Product code: ZESORA



RED

Product code: ZESRED

THE STRATA CHAIR



The Strata chair - known for their strength and durability, the Strata is a closed back chair suitable for a range of indoor and outdoor venues, especially those where longevity is essential. Available in 13 different colour options to tailor to the majority of colour requirements, the Strata is the perfect blend of durability and modern simplistic style.

SUITABLE FOR
BOTH INDOOR AND
OUTDOOR USE



SWATCH SAMPLES
ARE AVAILABLE
FOR EVERY STRATA
COLOURWAY
THAT WE
OFFER





Incredibly light for ease of movement and storage



Stackable for space saving - up to 8 high



Easy clean, wipeable surface with a matt finish



5 year structural warranty



Complete one-piece back and seat means there are no gaps for the weather to penetrate

IN STOCK

Strata chairs in Jute and Moka with a compact laminate top on a Continental 4 Leg table base (page 93)

STRATA

With their simplistic, sleek design and choice of 13 different colours the Strata can fit perfectly into venues from outdoor café areas to beer gardens to burger bars to dessert shops, as well as office or school based canteens and breakout areas.

Not only is the Strata stunning but it is so strong that we balanced a 4 x 4 on a set of four of the chairs and they held it with ease!!!

Weight	3.8kg
Height	810mm
Depth	430mm
Width	500mm
Seat height	455mm
Colour	13 colour options
Materials	Polypropylene
Stack quantity	8
Stocked or made to order	In stock

Not convinced on the strength and durability of the Strata chair? See us balance a 4 x 4 on top of our Strata's here.



Anti-scratch
stacking protection



Anthracite and Green Strata chairs with an 1100 x 700mm Black Werzalit top (page 57) on a Quattro single pedestal dining height base (page 78) Product code: BPRSINGLED001-1100700WZ055-STRGRN2-STRANT2



WHITE

Product code: STRWHI



LIGHT GREY

Product code: STRLGRY



ANTHRACITE

Product code: STRANT



RED

Product code: STRRED



BLUE

Product code: STRBLU



GREEN

Product code: STRGRN



YELLOW

Product code: STRYEL



JUTE

Product code: STRJUT



MOKA

Product code: STRMOK



GREY LILAC

Product code: STRLIL



LEEK GREEN

Product code: STRLEE



SKYLIGHT

Product code: STRSKY



VANILLA CREAM

Product code: STRVAN



THE FRESCO CHAIR



The Fresco is a robust polypropylene stacking chair with horizontally slatted back rest. The Italian designed Fresco chairs are known for their strength and durability and are suitable for a range of indoor and outdoor venues, especially those where longevity is essential.

Fresco White armchairs with a 600mm round Walnut Tuff Top® Laminate (page 10) on a Danilo medium dining height base (page 74)

SUITABLE FOR
BOTH INDOOR AND
OUTDOOR USE



SWATCH SAMPLES
ARE AVAILABLE
FOR EVERY FRESCO
COLOURWAY
THAT WE
OFFER





Lasting strength combined with high cleaning practicality



Stackable for space saving - up to 8 high



Easy clean, wipeable surface with a matt finish



5 year structural warranty



Incredibly light for ease of movement and storage

IN STOCK

FRESCO

Available in three different colours and as either an armchair or a side chair, the Fresco can add a touch of class to any hospitality dining or drinking area, indoors or out, as well as office canteen and breakout areas.

Weight	Armchair: 3.9kg Side chair: 3.8kg
Height	Armchair: 800mm Side chair: 785mm
Depth	505mm
Width	Armchair: 575mm Side chair: 480mm
Seat height	450mm
Arm height	620mm
Colour	3 colour options
Materials	Polypropylene
Stack quantity	8
Stocked or made to order	In stock



Anti-scratch
stacking protection

Fresco Anthracite side chairs with a 700mm square
White Tuff Top® MFC (page 29) on a Manhattan
690mm x 690mm dining height frame (page 105)
Product code: MANHAT675D001-700700MWHI-FREARMWHI2





Fresco White armchairs with a 600mm square Walnut Tuff Top® Laminate (page 10) on a Danilo medium dining height base (page 74) Product code: SSRMD001-600600MWAL-FREARMWHI2



SIDE CHAIR WHITE

Product code: FRESIDWHI



SIDE CHAIR GREY

Product code: FRESIDGRY



SIDE CHAIR ANTHRACITE

Product code: FRESIDANT



ARMCHAIR WHITE

Product code: FREARMWHI



ARMCHAIR GREY

Product code: FREARMGRY



ARMCHAIR BLACK

Product code: FREARMANT

THE PARIS CHAIR



The Paris Polypropylene Bistro Arm Chair. These beautiful sturdy armchairs are inspired by a classic French bistro style incorporating the classic wicker weave style with all the benefits of highly durable and cleanable polypropylene.

Two Paris armchairs with a Tuff Top® Compact Laminate top on a Continental grande base (page 93)



Lasting strength combined with high cleaning practicality



CATAS tested for outdoor use



Light resistant pigment means no colour fade from the sun



Stackable for space saving - up to 4 high



5 year structural warranty


 IN STOCK

At home anywhere from a high end bistro cafe, tapas or wine bar, to a classic pub beer garden, the Paris will bring a touch of class not only to your outdoor hospitality area but to any indoor drinking or dining area too.

Weight	5.4kg
Height	830mm
Depth	600mm
Width	580mm
Seat height	440mm
Colour	1 option
Materials	Polypropylene
Stack quantity	4
Stocked or made to order	In stock

SUITABLE FOR
BOTH INDOOR AND
OUTDOOR USE



690mm square Metallic Anthracite Tuff Top® Compact Laminate table top with a Continental 4 leg base (page 93) and two Paris armchairs (page 159)
Product code: CON4-690690CLMETANT-PARISARM2



ARMCHAIR

Product code: PARISARM



THE VIBE CHAIR



The Vibe chair - combining durable polypropylene with lightweight yet incredibly strong aluminium, the Vibe chair offers a large amount of character for venues working to a small budget. Suitable for both Indoor and outdoor use, the Vibe chair is our ultimate budget friendly hospitality dining solution.

Vibe Avocado and Cornflower chairs shown with 1200 x 700mm White Tuff Top® MFC tops (page 26) on Manhattan bases (page 105)

SUITABLE FOR
BOTH INDOOR AND
OUTDOOR USE





Extremely budget friendly yet sturdy and durable



Easy clean, wipeable surface



Incredibly light for ease of movement and removable legs for condensed storage requirements



Sackable for space saving - up to 8 high



5 year structural warranty

IN STOCK

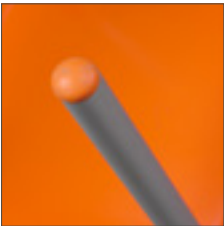
VIBE CHAIR

The Vibe polypropylene chair is vibrant, bright and robust. Perfect for adding a punch of character and colour to any social space. The Vibe is our budget polypropylene chair, perfect for any restaurant, bar, canteen or breakout space looking to add a lot of character on a smaller budget. Available in 10 different colourways, the Vibe can add a splash of colour and fun to any room or outdoor space.

CHAIR

Weight	2.8kg
Height	830mm
Depth	550mm
Width	450mm
Seat height	450mm
Colour	10 colour options
Materials	Polypropylene with aluminium legs
Stack quantity	8
Stocked or made to order	In stock

SWATCH SAMPLES
ARE AVAILABLE
FOR EVERY VIBE
COLOURWAY
THAT WE
OFFER



Feet match seat colour



Vibe Relax Blue chairs with a White Tuff Top® MFC (page 29)
on a Phoenix dining height base (page 97)
Product Code: PHOSD001-700700MWHI-VIBRELBLU2



BLACK

Product code: VIBBLA



RELAX BLUE

Product code: VIBRELBLU



AVOCADO

Product code: VIBAVO



TERRACOTTA RED

Product code: VIBTERRED



DARK GREY

Product code: VIBDARGRY



CORNFLOWER BLUE

Product code: VIBCORBLU



ORANGE

Product code: VIBORA



PLUM

Product code: VIBPLU



WHITE

Product code: VIBWHI



MUSTARD

Product code: VIBMUS



THE CANTERBURY RANGE



The Canterbury range - with its rattan effect weave and slatted wood effect pattern the Canterbury range combines all the design attributes of a basket weave product while benefitting from the durability and cleaning practicality of polypropylene. Incredibly stylish, the Canterbury range comprises of an armchair, a side chair, and two sizes of table, and is guaranteed to add a touch of budget conscious class to any outdoor dining or drinking area. Pairs brilliantly with the Plaza parasol for the ultimate outdoor dining solution.

SUITABLE FOR
BOTH INDOOR AND
OUTDOOR USE





Lasting strength combined with high cleaning practicality



CATAS tested for outdoor use



Light resistant pigment means no colour fade from the sun



Chair stackable for space saving - up to 6 high



Adjustable feet on table to provide stability on any surface



5 year structural warranty

IN STOCK

CANTERBURY CHAIR

Combining cleaning practicality with lasting strength, the Canterbury chair has a rattan effect look but benefits from the strength of polypropylene. Extremely modern and relevant, this incredibly comfortable and durable chair will add a touch of class to any restaurant, hotel, pub, bar, or Café. Available as either an armchair or a side chair.

Weight	Side chair: 3.8kg Armchair: 4.6kg
Height	880mm
Depth	580mm
Width	Side chair: 575mm Armchair: 475mm
Seat height	450mm
Arm height	660mm
Colour	1 colour option
Materials	Polypropylene
Stack quantity	6
Stocked or made to order	In stock



SIDE CHAIR

Product code: CANSID



ARMCHAIR

Product code: CANARM

SEE LATEST OPTIONS
ON OUR WEBSITE



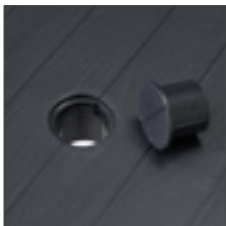
CANTERBURY TABLE

The Canterbury table has a rattan effect frame with a slatted wood effect surface while benefiting from the strength and cleaning practicality of polypropylene. Featuring adjustable feet, the tables are equipped with a 55mm parasol hole with replaceable cap/bung (perfect for our Plaza parasol), the Canterbury is available as a 4 seater or a 6 seater option making it the perfect table for any outdoor dining requirements.

Weight	4 seater: 9.2kg 6 seater: 15kg
Height	750mm
Depth	900mm
Width	4 seater: 900mm 6 seater: 1500mm
Colour	1 colour option
Materials	Polypropylene
Stocked or made to order	In stock



Adjustable feet



Parasol hole



Four Canterbury armchairs with a 4 seater Canterbury table
Product code: CANTAB4CANARM4



Four Canterbury side chairs with a 6 seater Canterbury table
Product code: CANTAB6CANSID4



4 SEATER TABLE

Product code: CANTAB4



6 SEATER TABLE

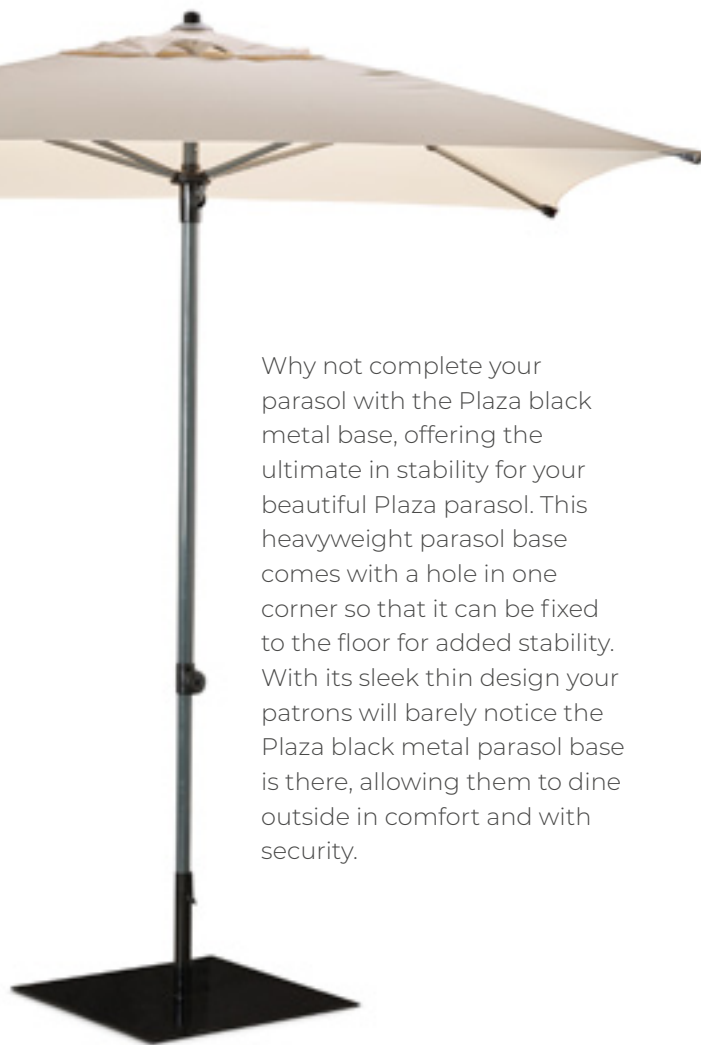
Product code: CANTAB6

PLAZA PARASOL

At 2000mm wide the plaza will provide coverage for plenty of your businesses clientele. And with the Plaza parasol being made from 200gr / m² Polyester, the plaza can provide coverage from both sun and light showers, perfect for that unpredictable British weather. The Plaza has an aluminium frame making it light yet incredibly durable, and comes in two amazing colours – Ecru and Anthracite. The Plaza also has a wind escape hole at the top so that high gusts of wind pass through, reducing the risk of the parasol taking off, and a hole in the optional black metal base to allow the base to be fixed to the floor!!

Weight	5.2kg
Height	2500mm
Depth	2000mm
Width	2000mm
Colour	2 colour options
Materials	200gr / m ² polyester and aluminium shaft Base: metalw
Stocked or made to order	In stock

Why not complete your parasol with the Plaza black metal base, offering the ultimate in stability for your beautiful Plaza parasol. This heavyweight parasol base comes with a hole in one corner so that it can be fixed to the floor for added stability. With its sleek thin design your patrons will barely notice the Plaza black metal parasol base is there, allowing them to dine outside in comfort and with security.



PLAZA BLACK METAL BASE

Product code: PARAPLAZABASE



PLAZA PARASOL ECRU

Product code:
PARAPLAZA2000SQECRU-
PARAPLAZABASE



PLAZA PARASOL ANTHRACITE

Product code:
PARAPLAZA2000SQANT-
PARAPLAZABASE

Parasol is available with or without Black Metal Base

SETS

CANTERBURY 6 SEATER TABLE
& SIX CHAIRS / PLAZA PARASOL ECRU

Product code: CANTAB6CANSID6-
PARAPLAZA2000SQECR-PARAPLAZABASE



CANTERBURY 6 SEATER TABLE
& SIX CHAIRS / PLAZA PARASOL ANTHRACITE

Product code: CANTAB6CANSID6-
PARAPLAZA2000SQANT-PARAPLAZABASE



SWATCH SAMPLES
ARE AVAILABLE
FOR EVERY PLAZA
PARASOL FABRIC
COLOURWAY
THAT WE
OFFER





ADDITIONAL SERVICES

ORDERING SWATCHES

Looking to buy contract furniture but not sure what you need? Why not use our free sampling service!

FREE TO ORDER

FOR ANY
STOCKED
OR BESPOKE
TABLE TOP

AS MANY
INDIVIDUAL
SAMPLES AS
YOU NEED

FREE DELIVERY
– SAME DAY
DESPATCH
WHEN ORDERED
BY 12PM



HUGE RANGE OF SAMPLES

Samples available for any stocked or bespoke made to order table top – 100's of options to choose from.

FIND YOUR COLOUR AND STYLE

Are you matching a brand colour, a theme, or a specific colour scheme? We offer seven styles of table top, stocked and made to order, with well over 100 different decors and finishes to compliment any design requirement.

SEE AND FEEL THE PRODUCT

Sometimes a photograph isn't enough – our free sample ordering service allows you to have your product in your hands, to see and to feel, so you don't have to just rely on imagination.

Want to know more about our contract furniture samples?

Our team are ready to help!

[Call us today](#)





IPAN IPAN

Wireless charging solution for your dining tables

Built to last, suitable for indoor and outdoor use, IPANIPAN is the perfect way to attract more customers.

The most integrated wireless charging station

Integrated into the mass and invisible on surface, the charging areas merge with the decor using a simple marking on the table top. This ensures the furniture keeps its integrity, giving a perfect smooth touch and refined design.



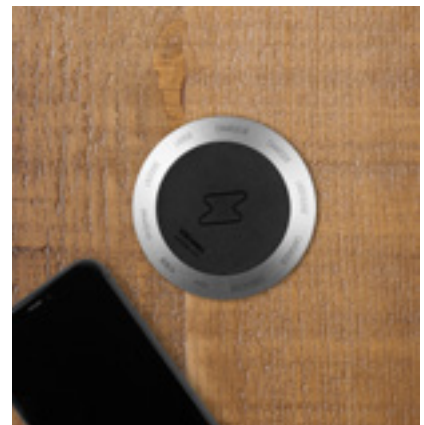
THE ANTENNAS



EMBEDDED



FLAT



ON TOP

WANT TO KNOW MORE? CALL US TODAY

A UNIQUE BATTERY-POWERED RANGE



IPANIPAN chargers can be installed on your tables without worrying about access to electricity.

WIRELESS CHARGING STATION



Wireless charging on your table. The guarantee of a reliable and durable charging solution that is certified to the Qi standard by the wireless power consortium.

USB PORTS



Two USB ports allow fast charging of phones, tablets, power banks and other mobile devices.

AUTONOMY



The battery pack is powered by a 15 Ah battery which provides up to 8 days of autonomy depending on use.

INDOOR & OUTDOOR



The battery pack has been designed for professional use. Its reinforced case and its IP 65 certification allow it to be used both indoors and outdoors.

SAFETY & CONVENIENCE

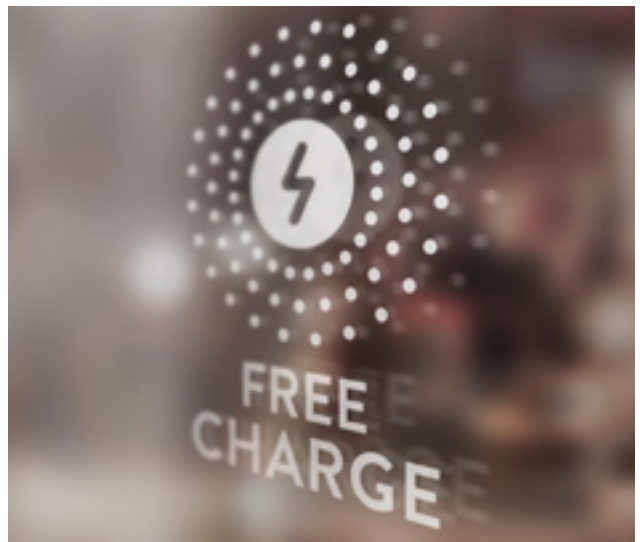


A magnetic key allows you to unlock the battery and extract it in a jiffy to recharge it.

CHARGING TRAY



The charging tray allows four batteries to be recharged simultaneously in 7 hours. It can be used flat or fixed on a wall.



POWDER COATING

Reflect your brand colours with bespoke powder-coated contract furniture

We recognise that hospitality venues such as restaurants, bars, pubs, cafés and hotels are often looking at ways to make their venues unique. Brand is extremely important in the world we live in today so these venues require ways to ensure the environment within their venues can represent and reflect each individual brand and meet themes specific to each individual establishment's requirement.



WANT TO KNOW MORE? CALL US TODAY

Available on any completely metal product

REFLECT YOUR BRAND

Brand identity is key to many businesses, more so now than ever before. With so many RAL colours to choose from we can help you match nearly any brand colour or compliment any colour scheme or theme.

INCREASES DURABILITY

Powder coating doesn't just enhance the look and feel of your product, it is also incredibly durable, highly corrosion resistant, and makes cleaning and maintaining your products so much easier.

NEARLY UNLIMITED OPTIONS

100s of RAL colour options to choose from. Simply contact us with your requirements and our in house experts will talk you through all the possibilities.

MULTIPLE FINISHES

You can choose from Matt, Satin, Semi-Gloss, and Gloss finishes to further enhance your chosen colour.



METAL INSERTS AND FIXINGS

We offer a metal insert and fixing service against any of our stocked or bespoke made to order Tuff Top® Laminate and Tuff Top® MFC range table tops.

Using our in-house CNC machine, we can drill and route the Table Base Spider screwing pattern of all relevant bases into your chosen table top. From there we will add a metal fixing insert into the table top into which your fixing screw will sit.

The advantage of the metal fixing service is that you don't have to spend valuable time measuring where each table base will sit on a table top, while being much easier to attach the base to the top as the metal insert screws just screw straight into the metal fixing.

A must for any customer when multiples of tables are required. There is no minimum order to take advantage of this service. See our Table Base section for all table bases compatible with this service.



WANT TO KNOW
MORE? OUR TEAM
ARE READY TO HELP!
CALL US TODAY



CABLE PORTS AND PARASOL HOLES

CONTACT US TODAY
TO DISCUSS ADDING
CABLE PORTS OR
PARASOL HOLES WITH
OPTIONAL PLASTIC
INSERTS INTO OUR
TABLE TOPS



NOTES



